

Anti-BAGE3 antibody (10-90 Internal) (STJ91808)

STJ91808

GENERAL INFORMATION

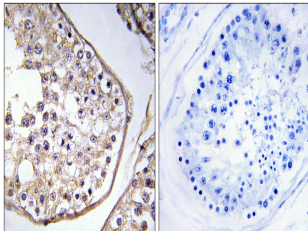
Product Type	Primary antibodies
Short Description	Rabbit polyclonal antibody anti-B Melanoma antigen 3 (10-90 Internal) is suitable for use in Immunohistochemistry, Immunofluorescence and ELISA research applications.
Applications	IHC-P, IF-P, ELISA
Host/Source	Rabbit
Reactivity	Human, Rat, Mouse

PRODUCT PROPERTIES

Clonality	Polyclonal
Clone ID	
Concentration	1 mg/mL
Conjugation	Unconjugated
Purification	The antibody was affinity-purified from rabbit anti-serum by affinity-chromatography.
Dilution Range	IHC 1:100-1:300 ELISA 1:20000
Formulation	PBS, 50% Glycerol, 0.5% BSA and 0.02% Sodium Azide.
Isotype	IgG
Storage Instruction	Store at -20°C for up to 1 year from the date of receipt, and avoid repeat freeze-thaw cycles.

TARGET INFORMATION

Gene ID	85318
Gene Symbol	BAGE3
Uniprot ID	BAGE3_HUMAN
Immunogen	The antiserum was produced against synthesized peptide derived from human BAGE3 at amino acid range 41-90
Immunogen Region	10-90 Internal
Specificity	BAGE3 polyclonal antibody (B Melanoma Antigen 3) binds to endogenous B Melanoma Antigen 3 at the amino acid region 10-90 Internal.
Immunogen Sequence	



Immunohistochemistry analysis of paraffin-embedded human testis, using BAGE3 Antibody. The picture on the right is blocked with the synthesized peptide.