

Anti-BAG3 antibody (380-460 Internal) (STJ91805)

STJ91805

GENERAL INFORMATION

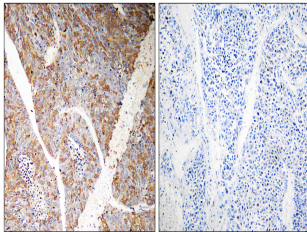
Product Type	Primary antibodies
Short Description	Rabbit polyclonal antibody anti-Bag Family Molecular Chaperone Regulator 3 (380-460 Internal) is suitable for use in Western Blot, Immunohistochemistry, Immunofluorescence and ELISA research applications.
Applications	WB, IHC-P, IF-P, ELISA
Host/Source	Rabbit
Reactivity	Human, Mouse, Rat

PRODUCT PROPERTIES

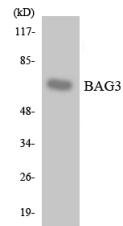
Clonality	Polyclonal
Clone ID	
Concentration	1 mg/mL
Conjugation	Unconjugated
Purification	The antibody was affinity-purified from rabbit anti-serum by affinity-chromatography.
Dilution Range	WB 1:500-1:2000 IHC 1:100-1:300 ELISA 1:40000
Formulation	PBS, 50% Glycerol, 0.5% BSA and 0.02% Sodium Azide.
Isotype	IgG
Storage Instruction	Store at -20°C for up to 1 year from the date of receipt, and avoid repeat freeze-thaw cycles.

TARGET INFORMATION

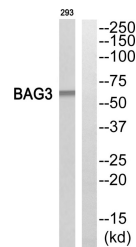
Gene ID	9531
Gene Symbol	BAG3
Uniprot ID	BAG3_HUMAN
Immunogen	The antiserum was produced against synthesized peptide derived from human BAG3 at amino acid range 411-460
Immunogen Region	380-460 Internal
Specificity	BAG3 polyclonal antibody (Bag Family Molecular Chaperone Regulator 3) binds to endogenous Bag Family Molecular Chaperone Regulator 3 at the amino acid region 380-460 Internal.
Immunogen Sequence	



Immunohistochemistry analysis of paraffin-embedded human liver carcinoma, using BAG3 Antibody. The lane on the right is blocked with the BAG3 peptide.



Western blot analysis of the lysates from K562 cells using BAG3 antibody.



Western blot analysis of BAG3 Antibody. The lane on the right is blocked with the BAG3 peptide.

This product is suitable for in-vitro studies under the RESEARCH USE ONLY [RUO] licence. This product must not be used as for diagnostic or other medical purposes.
St John's Laboratory Ltd, Knowledge Dock Business Centre, University Way, London, E16 2RD | Tel: 0208 223 3081