

Anti-ACTL6A antibody (180-260 Internal) (STJ91804)

STJ91804

GENERAL INFORMATION

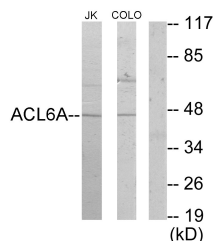
Product Type	Primary antibodies
Short Description	Rabbit polyclonal antibody anti-Actin-Like Protein 6a (180-260 Internal) is suitable for use in Western Blot, Immunohistochemistry, Immunofluorescence, Immunocytochemistry and ELISA research applications.
Applications	WB, IHC-P, IF, ICC, ELISA
Host/Source	Rabbit
Reactivity	Human, Mouse, Rat

PRODUCT PROPERTIES

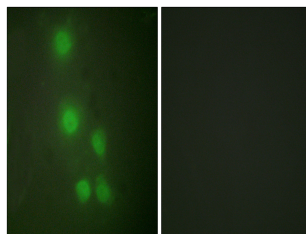
Clonality	Polyclonal
Clone ID	
Concentration	1 mg/mL
Conjugation	Unconjugated
Purification	The antibody was affinity-purified from rabbit anti-serum by affinity-chromatography.
Dilution	WB 1:500-1:2000
Range	IHC 1:100-1:300 IF 1:200-1:1000 ELISA 1:10000
Formulation	PBS, 50% Glycerol, 0.5% BSA and 0.02% Sodium Azide.
Isotype	IgG
Storage	Store at -20°C for up to 1 year from the date of receipt, and avoid repeat freeze-thaw cycles.
Instruction	

TARGET INFORMATION

Gene ID	86
Gene Symbol	ACTL6A
Uniprot ID	ACL6A_HUMAN
Immunogen	The antiserum was produced against synthesized peptide derived from human ACTL6A at amino acid range 201-250
Immunogen Region	180-260 Internal
Specificity	ACTL6A polyclonal antibody (Actin-Like Protein 6a) binds to endogenous Actin-Like Protein 6a at the amino acid region 180-260 Internal.
Immunogen Sequence	



Western blot analysis of lysates from Jurkat and COLO205 cells, using ACTL6A Antibody. The lane on the right is blocked with the synthesized peptide.



Immunofluorescence analysis of HUVEC cells, using ACTL6A Antibody. The picture on the right is blocked with the synthesized peptide.

This product is suitable for in-vitro studies under the RESEARCH USE ONLY [RUO] licence. This product must not be used as for diagnostic or other medical purposes.
St John's Laboratory Ltd, Knowledge Dock Business Centre, University Way, London, E16 2RD | Tel: 0208 223 3081