

Anti-ARID1B antibody (1340-1420 Internal) (STJ91803)

STJ91803

GENERAL INFORMATION

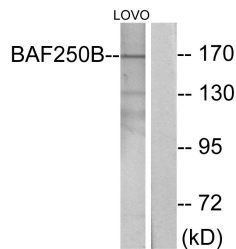
Product Type	Primary antibodies
Short Description	Rabbit polyclonal antibody anti-At-Rich Interactive Domain-Containing Protein 1b (1340-1420 Internal) is suitable for use in Western Blot, Immunohistochemistry, Immunofluorescence, Immunocytochemistry and ELISA research applications.
Applications	WB, IHC-P, IF, ICC, ELISA
Host/Source	Rabbit
Reactivity	Human, Rat

PRODUCT PROPERTIES

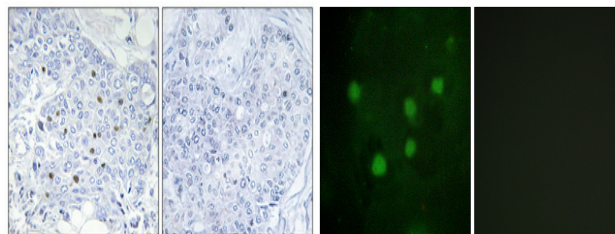
Clonality	Polyclonal
Clone ID	
Concentration	1 mg/mL
Conjugation	Unconjugated
Purification	The antibody was affinity-purified from rabbit anti-serum by affinity-chromatography.
Dilution Range	WB 1:500-1:2000 IHC 1:100-1:300 IF 1:200-1:1000 ELISA 1:10000
Formulation	PBS, 50% Glycerol, 0.5% BSA and 0.02% Sodium Azide.
Isotype	IgG
Storage Instruction	Store at -20°C for up to 1 year from the date of receipt, and avoid repeat freeze-thaw cycles.

TARGET INFORMATION

Gene ID	57492
Gene Symbol	ARID1B
Uniprot ID	ARI1B_HUMAN
Immunogen	The antiserum was produced against synthesized peptide derived from human BAF250B at amino acid range 1371-1420
Immunogen Region	1340-1420 Internal
Specificity	ARID1B polyclonal antibody (At-Rich Interactive Domain-Containing Protein 1b) binds to endogenous At-Rich Interactive Domain-Containing Protein 1b at the amino acid region 1340-1420 Internal.
Immunogen Sequence	

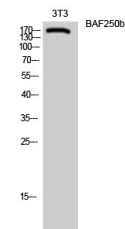


Western blot analysis of lysates from LOVO cells, using BAF250B Antibody. The lane on the right is blocked with the synthesized peptide.



Immunohistochemical analysis of paraffin-embedded Human breast cancer. Antibody was diluted at 1:100 (4°C overnight). High-pressure and temperature Tris-EDTA, pH8.0 was used for antigen retrieval. Negative control (right) obtained from antibody was pre-absorbed by immunogen peptide.

Immunofluorescence analysis of HUVEC cells, using BAF250B Antibody. The picture on the right is blocked with the synthesized peptide.



Western blot analysis of 3T3 cells using BAF250B Polyclonal Antibody diluted at 1: 1000

This product is suitable for in-vitro studies under the RESEARCH USE ONLY [RUO] licence. This product must not be used as for diagnostic or other medical purposes.
St John's Laboratory Ltd, Knowledge Dock Business Centre, University Way, London, E16 2RD | Tel: 0208 223 3081