

Anti-BAD antibody (80-160) (STJ91798)

STJ91798

GENERAL INFORMATION

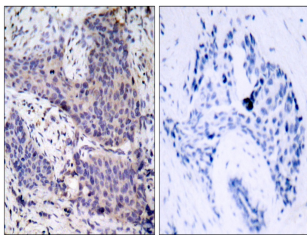
Product Type	Primary antibodies
Short Description	Rabbit polyclonal antibody anti-Bcl2-Associated Agonist Of Cell Death (80-160) is suitable for use in Western Blot, Immunohistochemistry, Immunofluorescence and ELISA research applications.
Applications	WB, IHC-P, IF-P, ELISA
Host/Source	Rabbit
Reactivity	Human, Mouse, Rat

PRODUCT PROPERTIES

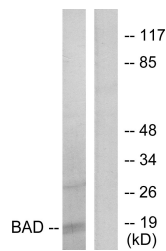
Clonality	Polyclonal
Clone ID	
Concentration	1 mg/mL
Conjugation	Unconjugated
Purification	The antibody was affinity-purified from rabbit anti-serum by affinity-chromatography.
Dilution Range	WB 1:500-1:2000 IHC 1:100-1:300 ELISA 1:20000
Formulation	PBS, 50% Glycerol, 0.5% BSA and 0.02% Sodium Azide.
Isotype	IgG
Storage Instruction	Store at -20°C for up to 1 year from the date of receipt, and avoid repeat freeze-thaw cycles.

TARGET INFORMATION

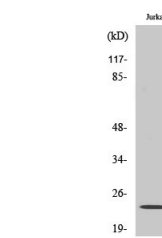
Gene ID	572
Gene Symbol	BAD
Uniprot ID	BAD_HUMAN
Immunogen	The antiserum was produced against synthesized peptide derived from human BAD at amino acid range 102-151
Immunogen Region	80-160
Specificity	BAD polyclonal antibody (Bcl2-Associated Agonist Of Cell Death) binds to endogenous Bcl2-Associated Agonist Of Cell Death at the amino acid region 80-160.
Immunogen Sequence	



Immunohistochemistry analysis of paraffin-embedded human breast carcinoma tissue, using BAD Antibody. The picture on the right is blocked with the synthesized peptide.



Western blot analysis of lysates from 293 cells, treated with Forskolin, using BAD Antibody. The lane on the right is blocked with the synthesized peptide.



Western blot analysis of various cells using Bad Polyclonal Antibody