

Anti-BACE1 antibody (440-520) (STJ91795)

STJ91795

GENERAL INFORMATION

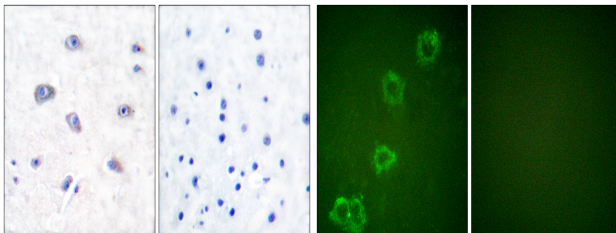
Product Type	Primary antibodies
Short Description	Rabbit polyclonal antibody anti-Beta-Secretase 1 (440-520) is suitable for use in Immunohistochemistry, Immunofluorescence, Immunocytochemistry and ELISA research applications.
Applications	IHC-P, IF, ICC, ELISA
Host/Source	Rabbit
Reactivity	Human, Mouse, Rat

PRODUCT PROPERTIES

Clonality	Polyclonal
Clone ID	
Concentration	1 mg/mL
Conjugation	Unconjugated
Purification	The antibody was affinity-purified from rabbit anti-serum by affinity-chromatography.
Dilution Range	IHC 1:100-1:300 IF 1:200-1:1000 ELISA 1:5000
Formulation	PBS, 50% Glycerol, 0.5% BSA and 0.02% Sodium Azide.
Isotype	IgG
Storage Instruction	Store at -20°C for up to 1 year from the date of receipt, and avoid repeat freeze-thaw cycles.

TARGET INFORMATION

Gene ID	23621
Gene Symbol	BACE1
Uniprot ID	BACE1_HUMAN
Immunogen	The antiserum was produced against synthesized peptide derived from human BACE at amino acid range 452-501
Region	440-520
Specificity	BACE1 polyclonal antibody (Beta-Secretase 1) binds to endogenous Beta-Secretase 1 at the amino acid region 440-520.
Immunogen Sequence	



Immunohistochemistry analysis of paraffin-embedded human brain tissue, using BACE Antibody. The picture on the right is blocked with the synthesized peptide.

Immunofluorescence analysis of HUVEC cells, using BACE Antibody. The picture on the right is blocked with the synthesized peptide.