

Anti-AVPR2 antibody (40-120 Internal) (STJ91788)

STJ91788

GENERAL INFORMATION

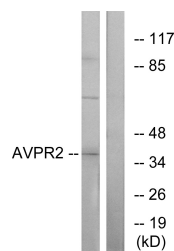
Product Type	Primary antibodies
Short Description	Rabbit polyclonal antibody anti-Vasopressin V2 Receptor (40-120 Internal) is suitable for use in Western Blot, Immunofluorescence, Immunocytochemistry and ELISA research applications.
Applications	WB, IF, ICC, ELISA
Host/Source	Rabbit
Reactivity	Human, Rat, Mouse

PRODUCT PROPERTIES

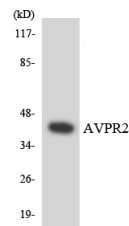
Clonality	Polyclonal
Clone ID	
Concentration	1 mg/mL
Conjugation	Unconjugated
Purification	The antibody was affinity-purified from rabbit anti-serum by affinity-chromatography.
Dilution Range	WB 1:500-1:2000 IF 1:200-1:1000 ELISA 1:10000
Formulation	PBS, 50% Glycerol, 0.5% BSA and 0.02% Sodium Azide.
Isotype	IgG
Storage Instruction	Store at -20°C for up to 1 year from the date of receipt, and avoid repeat freeze-thaw cycles.

TARGET INFORMATION

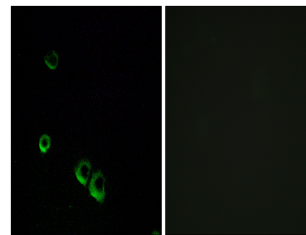
Gene ID	554
Gene Symbol	AVPR2
Uniprot ID	V2R_HUMAN
Immunogen	The antiserum was produced against synthesized peptide derived from human AVPR2 at amino acid range 72-121
Immunogen Region	40-120 Internal
Specificity	AVPR2 polyclonal antibody (Vasopressin V2 Receptor) binds to endogenous Vasopressin V2 Receptor at the amino acid region 40-120 Internal.
Immunogen Sequence	



Western blot analysis of lysates from RAW264.7 cells, using AVPR2 Antibody. The lane on the right is blocked with the synthesized peptide.



Western blot analysis of the lysates from Jurkat cells using AVPR2 antibody.



Immunofluorescence analysis of MCF7 cells, using AVPR2 Antibody. The picture on the right is blocked with the synthesized peptide.

This product is suitable for in-vitro studies under the RESEARCH USE ONLY [RUO] licence. This product must not be used as for diagnostic or other medical purposes.
St John's Laboratory Ltd, Knowledge Dock Business Centre, University Way, London, E16 2RD | Tel: 0208 223 3081