

Anti-ATPAF2 antibody (40-120 Internal) (STJ91778)

STJ91778

GENERAL INFORMATION

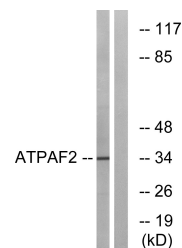
Product Type	Primary antibodies
Short Description	Rabbit polyclonal antibody anti-Atp Synthase Mitochondrial F1 Complex Assembly Factor 2 (40-120 Internal) is suitable for use in Western Blot and ELISA research applications.
Applications	WB, ELISA
Host/Source	Rabbit
Reactivity	Human, Mouse

PRODUCT PROPERTIES

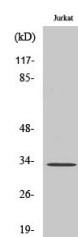
Clonality	Polyclonal
Clone ID	
Concentration	1 mg/mL
Conjugation	Unconjugated
Purification	The antibody was affinity-purified from rabbit anti-serum by affinity-chromatography.
Dilution	WB 1:500-1:2000
Range	ELISA 1:40000
Formulation	PBS, 50% Glycerol, 0.5% BSA and 0.02% Sodium Azide.
Isotype	IgG
Storage	Store at -20°C for up to 1 year from the date of receipt, and avoid repeat freeze-thaw cycles.
Instruction	

TARGET INFORMATION

Gene ID	91647
Gene Symbol	ATPAF2
Uniprot ID	ATPF2_HUMAN
Immunogen	The antiserum was produced against synthesized peptide derived from human ATPAF2 at amino acid range 21-70
Immunogen Region	40-120 Internal
Specificity	ATPAF2 polyclonal antibody (Atp Synthase Mitochondrial F1 Complex Assembly Factor 2) binds to endogenous Atp Synthase Mitochondrial F1 Complex Assembly Factor 2 at the amino acid region 40-120 Internal.
Immunogen Sequence	



Western blot analysis of lysates from Jurkat cells, using ATPAF2 Antibody. The lane on the right is blocked with the synthesized peptide.



Western blot analysis of various cells using ATPAF2 Polyclonal Antibody

This product is suitable for in-vitro studies under the RESEARCH USE ONLY [RUO] licence. This product must not be used as for diagnostic or other medical purposes.
 St John's Laboratory Ltd, Knowledge Dock Business Centre, University Way, London, E16 2RD | Tel: 0208 223 3081