

Anti-DMAC2L antibody (40-120 Internal) (STJ91775)

STJ91775

GENERAL INFORMATION

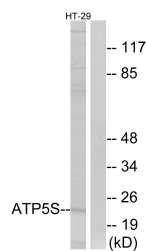
Product Type	Primary antibodies
Short Description	Rabbit polyclonal antibody anti-Atp Synthase Subunit S-Mitochondrial (40-120 Internal) is suitable for use in Western Blot and ELISA research applications.
Applications	WB, ELISA
Host/Source	Rabbit
Reactivity	Human, Mouse

PRODUCT PROPERTIES

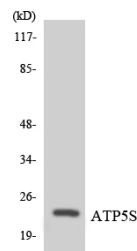
Clonality	Polyclonal
Clone ID	
Concentration	1 mg/mL
Conjugation	Unconjugated
Purification	The antibody was affinity-purified from rabbit anti-serum by affinity-chromatography.
Dilution Range	WB 1:500-1:2000 ELISA 1:10000
Formulation	PBS, 50% Glycerol, 0.5% BSA and 0.02% Sodium Azide.
Isotype	IgG
Storage Instruction	Store at -20°C for up to 1 year from the date of receipt, and avoid repeat freeze-thaw cycles.

TARGET INFORMATION

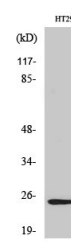
Gene ID	27109
Gene Symbol	DMAC2L
Uniprot ID	ATP5S_HUMAN
Immunogen	The antiserum was produced against synthesized peptide derived from human ATP5S at amino acid range 21-70
Immunogen Region	40-120 Internal
Specificity	DMAC2L polyclonal antibody (Atp Synthase Subunit S-Mitochondrial) binds to endogenous Atp Synthase Subunit S-Mitochondrial at the amino acid region 40-120 Internal.
Immunogen Sequence	



Western blot analysis of lysates from HT-29 cells, using ATP5S Antibody. The lane on the right is blocked with the synthesized peptide.



Western blot analysis of the lysates from K562 cells using ATP5S antibody.



Western blot analysis of various cells using ATP5S Polyclonal Antibody

This product is suitable for in-vitro studies under the RESEARCH USE ONLY [RUO] licence. This product must not be used as for diagnostic or other medical purposes.
St John's Laboratory Ltd, Knowledge Dock Business Centre, University Way, London, E16 2RD | Tel: 0208 223 3081