

Anti-ATP5ME antibody (30-110 Internal) (STJ91772)

STJ91772

GENERAL INFORMATION

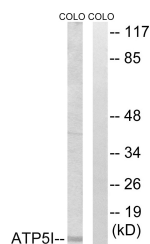
Product Type	Primary antibodies
Short Description	Rabbit polyclonal antibody anti-Atp Synthase Subunit E-Mitochondrial (30-110 Internal) is suitable for use in Western Blot, Immunohistochemistry, Immunofluorescence and ELISA research applications.
Applications	WB, IHC-P, IF-P, ELISA
Host/Source	Rabbit
Reactivity	Human, Rat, Mouse

PRODUCT PROPERTIES

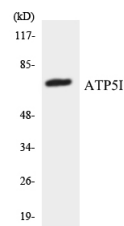
Clonality	Polyclonal
Clone ID	
Concentration	1 mg/mL
Conjugation	Unconjugated
Purification	The antibody was affinity-purified from rabbit anti-serum by affinity-chromatography.
Dilution Range	WB 1:500-1:2000 IHC 1:100-1:300 ELISA 1:20000
Formulation	PBS, 50% Glycerol, 0.5% BSA and 0.02% Sodium Azide.
Isotype	IgG
Storage Instruction	Store at 20°C for up to 1 year from the date of receipt, and avoid repeat freeze-thaw cycles.

TARGET INFORMATION

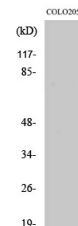
Gene ID	521
Gene Symbol	ATP5ME
Uniprot ID	ATP5L_HUMAN
Immunogen Region	The antiserum was produced against synthesized peptide derived from human ATP5I at amino acid range 20-69
Immunogen Region	30-110 Internal
Specificity	ATP5ME polyclonal antibody (Atp Synthase Subunit E-Mitochondrial) binds to endogenous Atp Synthase Subunit E-Mitochondrial at the amino acid region 30-110 Internal.
Immunogen Sequence	



Western blot analysis of lysates from COLO cells, using ATP5I Antibody. The lane on the right is blocked with the synthesized peptide.



Western blot analysis of the lysates from 293 cells using ATP5I antibody.



Western blot analysis of various cells using ATP5I Polyclonal Antibody.

This product is suitable for in-vitro studies under the RESEARCH USE ONLY [RUO] licence. This product must not be used as for diagnostic or other medical purposes.
St John's Laboratory Ltd, Knowledge Dock Business Centre, University Way, London, E16 2RD | Tel: 0208 223 3081