

Anti-ATP5PB antibody (130-210 Internal) (STJ91767)

STJ91767

GENERAL INFORMATION

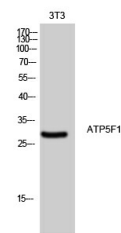
Product Type	Primary antibodies
Short Description	Rabbit polyclonal antibody anti-Atp Synthase F (0 Complex Subunit B1-Mitochondrial (130-210 Internal) is suitable for use in Western Blot and ELISA research applications.
Applications	WB, ELISA
Host/Source	Rabbit
Reactivity	Human, Mouse, Rat

PRODUCT PROPERTIES

Clonality	Polyclonal
Clone ID	
Concentration	1 mg/mL
Conjugation	Unconjugated
Purification	The antibody was affinity-purified from rabbit anti-serum by affinity-chromatography.
Dilution	WB 1:500-1:2000
Range	ELISA 1:10000
Formulation	PBS, 50% Glycerol, 0.5% BSA and 0.02% Sodium Azide.
Isotype	IgG
Storage	Store at -20°C for up to 1 year from the date of receipt, and avoid repeat freeze-thaw cycles.
Instruction	

TARGET INFORMATION

Gene ID	515
Gene Symbol	ATP5PB
Uniprot ID	AT5F1_HUMAN
Immunogen	Synthesized peptide derived from ATP5F1. at amino acid range: 130-210
Immunogen Region	130-210 Internal
Specificity	ATP5PB polyclonal antibody (Atp Synthase F (0 Complex Subunit B1-Mitochondrial) binds to endogenous Atp Synthase F (0 Complex Subunit B1-Mitochondrial at the amino acid region 130-210 Internal.
Immunogen Sequence	



Western blot analysis of 3T3 cells using ATP5F1 Polyclonal Antibody diluted at 1: 500

This product is suitable for in-vitro studies under the RESEARCH USE ONLY [RUO] licence. This product must not be used as for diagnostic or other medical purposes.
St John's Laboratory Ltd, Knowledge Dock Business Centre, University Way, London, E16 2RD | Tel: 0208 223 3081