

## Anti-ATP5F1C antibody (100-180 Internal) (STJ91765)

STJ91765

### GENERAL INFORMATION

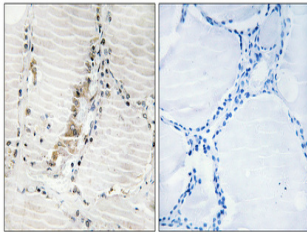
<b>Product Type</b>	Primary antibodies
<b>Short Description</b>	Rabbit polyclonal antibody anti-Atp Synthase Subunit Gamma-Mitochondrial (100-180 Internal) is suitable for use in Western Blot, Immunohistochemistry, Immunofluorescence and ELISA research applications.
<b>Applications</b>	WB, IHC-P, IF-P, ELISA
<b>Host/Source</b>	Rabbit
<b>Reactivity</b>	Human, Mouse, Rat

### PRODUCT PROPERTIES

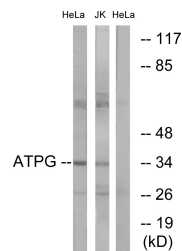
<b>Clonality</b>	Polyclonal
<b>Clone ID</b>	
<b>Concentration</b>	1 mg/mL
<b>Conjugation</b>	Unconjugated
<b>Purification</b>	The antibody was affinity-purified from rabbit anti-serum by affinity-chromatography.
<b>Dilution Range</b>	WB 1:500-1:2000 IHC 1:100-1:300 ELISA 1:40000
<b>Formulation</b>	PBS, 50% Glycerol, 0.5% BSA and 0.02% Sodium Azide.
<b>Isotype</b>	IgG
<b>Storage Instruction</b>	Store at -20°C for up to 1 year from the date of receipt, and avoid repeat freeze-thaw cycles.

### TARGET INFORMATION

<b>Gene ID</b>	509
<b>Gene Symbol</b>	ATP5F1C
<b>Uniprot ID</b>	ATPG_HUMAN
<b>Immunogen</b>	The antiserum was produced against synthesized peptide derived from human ATP5C1 at amino acid range 131-180
<b>Immunogen Region</b>	100-180 Internal
<b>Specificity</b>	ATP5F1C polyclonal antibody (Atp Synthase Subunit Gamma-Mitochondrial) binds to endogenous Atp Synthase Subunit Gamma-Mitochondrial at the amino acid region 100-180 Internal.
<b>Immunogen Sequence</b>	



Immunohistochemical analysis of paraffin-embedded Human thyroid gland. Antibody was diluted at 1:100 (4°C overnight). High-pressure and temperature Tris-EDTA, pH8.0 was used for antigen retrieval. Negative control (right) obtained from antibody was pre-absorbed by immunogen peptide.



Western blot analysis of lysates from HeLa cells and Jurkat cells, using ATPG Antibody. The lane on the right is blocked with the synthesized peptide.



Western blot analysis of various cells using ATP5C1 Polyclonal Antibody

This product is suitable for in-vitro studies under the RESEARCH USE ONLY [RUO] licence. This product must not be used as for diagnostic or other medical purposes.  
St John's Laboratory Ltd, Knowledge Dock Business Centre, University Way, London, E16 2RD | Tel: 0208 223 3081