

Anti-ATG4D antibody (Internal) (STJ91761)

STJ91761

GENERAL INFORMATION

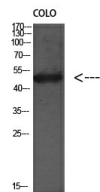
Product Type	Primary antibodies
Short Description	Rabbit polyclonal antibody anti-Cysteine Protease Atg4d (Internal) is suitable for use in Western Blot, Immunohistochemistry, Immunofluorescence and ELISA research applications.
Applications	WB, IHC-P, IF-P, ELISA
Host/Source	Rabbit
Reactivity	Human, Rat, Mouse

PRODUCT PROPERTIES

Clonality	Polyclonal
Clone ID	
Concentration	1 mg/mL
Conjugation	Unconjugated
Purification	The antibody was affinity-purified from rabbit anti-serum by affinity-chromatography.
Dilution Range	WB 1:500-1:2000 IHC 1:100-1:300 ELISA 1:5000
Formulation	PBS, 50% Glycerol, 0.5% BSA and 0.02% Sodium Azide.
Isotype	IgG
Storage Instruction	Store at -20°C for up to 1 year from the date of receipt, and avoid repeat freeze-thaw cycles.

TARGET INFORMATION

Gene ID	84971
Gene Symbol	ATG4D
Uniprot ID	ATG4D_HUMAN
Immunogen	Synthesized peptide derived from the Internal region of human Atg4D.
Immunogen Region	Internal
Specificity	ATG4D polyclonal antibody (Cysteine Protease Atg4d) binds to endogenous Cysteine Protease Atg4d at the amino acid region Internal.
Immunogen Sequence	



Western blot analysis of Colo using Antibody diluted at 1:1000. Secondary antibody was diluted at 1:20000