

Anti-ATF6B antibody (370-450 Internal) (STJ91754)

STJ91754

GENERAL INFORMATION

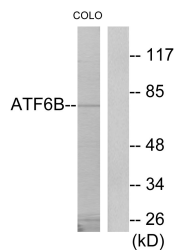
Product Type	Primary antibodies
Short Description	Rabbit polyclonal antibody anti-Cyclic Amp-Dependent Transcription Factor Atf-6 Beta (370-450 Internal) is suitable for use in Western Blot, Immunohistochemistry, Immunofluorescence and ELISA research applications.
Applications	WB, IHC-P, IF-P, ELISA
Host/Source	Rabbit
Reactivity	Human, Rat, Mouse

PRODUCT PROPERTIES

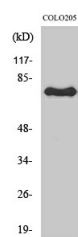
Clonality	Polyclonal
Clone ID	
Concentration	1 mg/mL
Conjugation	Unconjugated
Purification	The antibody was affinity-purified from rabbit anti-serum by affinity-chromatography.
Dilution	WB 1:500-1:2000
Range	ELISA 1:20000
Formulation	PBS, 50% Glycerol, 0.5% BSA and 0.02% Sodium Azide.
Isotype	IgG
Storage	Store at -20°C for up to 1 year from the date of receipt, and avoid repeat freeze-thaw cycles.
Instruction	

TARGET INFORMATION

Gene ID	1388
Gene Symbol	ATF6B
Uniprot ID	ATF6B_HUMAN
Immunogen	The antiserum was produced against synthesized peptide derived from human ATF6B at amino acid range 401-450
Immunogen Region	370-450 Internal
Specificity	ATF6B polyclonal antibody (Cyclic Amp-Dependent Transcription Factor Atf-6 Beta) binds to endogenous Cyclic Amp-Dependent Transcription Factor Atf-6 Beta at the amino acid region 370-450 Internal.
Immunogen Sequence	



Western blot analysis of lysates from COLO205 cells, using ATF6B Antibody. The lane on the right is blocked with the synthesized peptide.



Western blot analysis of various cells using ATF-6 Beta Polyclonal Antibody