

Anti-ATF3 antibody (100-180 C-Term) (STJ91752)

STJ91752

GENERAL INFORMATION

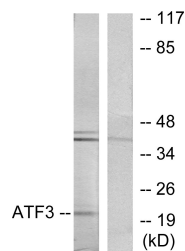
Product Type	Primary antibodies
Short Description	Rabbit polyclonal antibody anti-Cyclic Amp-Dependent Transcription Factor Atf-3 (100-180 C-Term) is suitable for use in Western Blot, Immunohistochemistry, Immunofluorescence and ELISA research applications.
Applications	WB, IHC-P, IF-P, ELISA
Host/Source	Rabbit
Reactivity	Human, Mouse, Rat

PRODUCT PROPERTIES

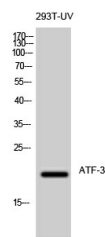
Clonality	Polyclonal
Clone ID	
Concentration	1 mg/mL
Conjugation	Unconjugated
Purification	The antibody was affinity-purified from rabbit anti-serum by affinity-chromatography.
Dilution Range	WB 1:500-1:2000 IHC 1:100-1:300 ELISA 1:5000
Formulation	PBS, 50% Glycerol, 0.5% BSA and 0.02% Sodium Azide.
Isotype	IgG
Storage Instruction	Store at -20°C for up to 1 year from the date of receipt, and avoid repeat freeze-thaw cycles.

TARGET INFORMATION

Gene ID	467
Gene Symbol	ATF3
Uniprot ID	ATF3_HUMAN
Immunogen	The antiserum was produced against synthesized peptide derived from human ATF3 at amino acid range 131-180
Immunogen Region	100-180 C-Term
Specificity	ATF3 polyclonal antibody (Cyclic Amp-Dependent Transcription Factor Atf-3) binds to endogenous Cyclic Amp-Dependent Transcription Factor Atf-3 at the amino acid region 100-180 C-Term.
Immunogen Sequence	



Western blot analysis of lysates from RAW264.7 cells, using ATF3 Antibody. The lane on the right is blocked with the synthesized peptide.



Western blot analysis of 293T-UV cells using ATF-3 Polyclonal Antibody diluted at 1: 500 cells nucleus extracted by Minute TM Cytoplasmic and Nuclear Fractionation kit (SC-003, Inventibiotec, MN, USA).

This product is suitable for in-vitro studies under the RESEARCH USE ONLY [RUO] licence. This product must not be used as for diagnostic or other medical purposes.
St John's Laboratory Ltd, Knowledge Dock Business Centre, University Way, London, E16 2RD | Tel: 0208 223 3081