

## Anti-ATF2 antibody (430-510) (STJ91748)

STJ91748

### GENERAL INFORMATION

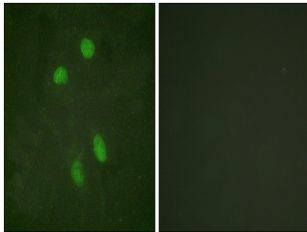
<b>Product Type</b>	Primary antibodies
<b>Short Description</b>	Rabbit polyclonal antibody anti-Cyclic Amp-Dependent Transcription Factor Atf-2 (430-510) is suitable for use in Immunohistochemistry, Immunofluorescence, Immunocytochemistry and ELISA research applications.
<b>Applications</b>	IHC-P, IF, ICC, ELISA
<b>Host/Source</b>	Rabbit
<b>Reactivity</b>	Human, Rat

### PRODUCT PROPERTIES

<b>Clonality</b>	Polyclonal
<b>Clone ID</b>	
<b>Concentration</b>	1 mg/mL
<b>Conjugation</b>	Unconjugated
<b>Purification</b>	The antibody was affinity-purified from rabbit anti-serum by affinity-chromatography.
<b>Dilution Range</b>	IHC 1:100-1:300 IF 1:200-1:1000 ELISA 1:5000
<b>Formulation</b>	PBS, 50% Glycerol, 0.5% BSA and 0.02% Sodium Azide.
<b>Isotype</b>	IgG
<b>Storage Instruction</b>	Store at -20°C for up to 1 year from the date of receipt, and avoid repeat freeze-thaw cycles.

### TARGET INFORMATION

<b>Gene ID</b>	1386
<b>Gene Symbol</b>	ATF2
<b>Uniprot ID</b>	ATF2_HUMAN
<b>Immunogen</b>	The antiserum was produced against synthesized peptide derived from human ATF2 at amino acid range 456-505
<b>Immunogen Region</b>	430-510
<b>Specificity</b>	ATF2 polyclonal antibody (Cyclic Amp-Dependent Transcription Factor Atf-2) binds to endogenous Cyclic Amp-Dependent Transcription Factor Atf-2 at the amino acid region 430-510.
<b>Immunogen Sequence</b>	



Immunofluorescence analysis of HeLa cells, using ATF2 Antibody. The picture on the right is blocked with the synthesized peptide.