

Anti-ATXN7L1 antibody (410-490 Internal) (STJ91741)

STJ91741

GENERAL INFORMATION

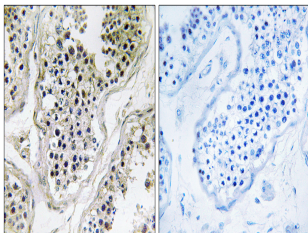
| | |
|--------------------------|---|
| Product Type | Primary antibodies |
| Short Description | Rabbit polyclonal antibody anti-Ataxin-7-Like Protein 1 (410-490 Internal) is suitable for use in Immunohistochemistry, Immunofluorescence and ELISA research applications. |
| Applications | IHC-P, IF-P, ELISA |
| Host/Source | Rabbit |
| Reactivity | Human, Mouse |

PRODUCT PROPERTIES

| | |
|-----------------------|--|
| Clonality | Polyclonal |
| Clone ID | |
| Concentration | 1 mg/mL |
| Conjugation | Unconjugated |
| Purification | The antibody was affinity-purified from rabbit anti-serum by affinity-chromatography. |
| Dilution Range | IHC 1:100-1:300 ELISA 1:10000 |
| Formulation | PBS, 50% Glycerol, 0.5% BSA and 0.02% Sodium Azide. |
| Isotype | IgG |
| Storage | Store at -20°C for up to 1 year from the date of receipt, and avoid repeat freeze-thaw cycles. |
| Instruction | |

TARGET INFORMATION

| | |
|---------------------------|--|
| Gene ID | 222255 |
| Gene Symbol | ATXN7L1 |
| Uniprot ID | AT7L1_HUMAN |
| Immunogen | The antiserum was produced against synthesized peptide derived from human ATXN7L1 at amino acid range 441-490 |
| Immunogen Region | 410-490 Internal |
| Specificity | ATXN7L1 polyclonal antibody (Ataxin-7-Like Protein 1) binds to endogenous Ataxin-7-Like Protein 1 at the amino acid region 410-490 Internal. |
| Immunogen Sequence | |



Immunohistochemistry analysis of paraffin-embedded human testis tissue, using ATXN7L1 Antibody. The picture on the right is blocked with the synthesized peptide.

This product is suitable for in-vitro studies under the RESEARCH USE ONLY [RUO] licence. This product must not be used as for diagnostic or other medical purposes.
St John's Laboratory Ltd, Knowledge Dock Business Centre, University Way, London, E16 2RD | Tel: 0208 223 3081