

Anti-ATXN2L antibody (540-620 Internal) (STJ91740)

STJ91740

GENERAL INFORMATION

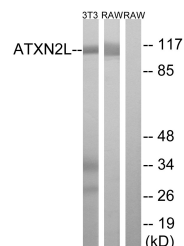
Product Type	Primary antibodies
Short Description	Rabbit polyclonal antibody anti-Ataxin-2-Like Protein (540-620 Internal) is suitable for use in Western Blot and ELISA research applications.
Applications	WB, ELISA
Host/Source	Rabbit
Reactivity	Human, Rat, Mouse

PRODUCT PROPERTIES

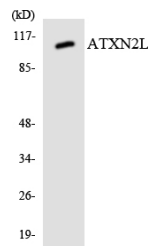
Clonality	Polyclonal
Clone ID	
Concentration	1 mg/mL
Conjugation	Unconjugated
Purification	The antibody was affinity-purified from rabbit anti-serum by affinity-chromatography.
Dilution Range	WB 1:500-1:2000 ELISA 1:20000
Formulation	PBS, 50% Glycerol, 0.5% BSA and 0.02% Sodium Azide.
Isotype	IgG
Storage Instruction	Store at -20°C for up to 1 year from the date of receipt, and avoid repeat freeze-thaw cycles.

TARGET INFORMATION

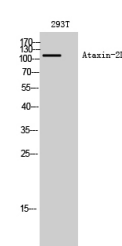
Gene ID	11273
Gene Symbol	ATXN2L
Uniprot ID	ATX2L_HUMAN
Immunogen	The antiserum was produced against synthesized peptide derived from human ATXN2L at amino acid range 571-620
Immunogen Region	540-620 Internal
Specificity	ATXN2L polyclonal antibody (Ataxin-2-Like Protein) binds to endogenous Ataxin-2-Like Protein at the amino acid region 540-620 Internal.
Immunogen Sequence	



Western blot analysis of lysates from NIH/3T3 and RAW264.7 cells, using ATXN2L Antibody. The lane on the right is blocked with the synthesized peptide.



Western blot analysis of the lysates from 293 cells using ATXN2L antibody.



Western blot analysis of 293T cells using Ataxin-2L Polyclonal Antibody diluted at 1:2000

This product is suitable for in-vitro studies under the RESEARCH USE ONLY [RUO] licence. This product must not be used as for diagnostic or other medical purposes.
St John's Laboratory Ltd, Knowledge Dock Business Centre, University Way, London, E16 2RD | Tel: 0208 223 3081