

## Anti-ATXN1 antibody (720-800) (STJ91738)

STJ91738

### GENERAL INFORMATION

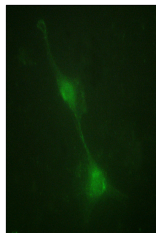
<b>Product Type</b>	Primary antibodies
<b>Short Description</b>	Rabbit polyclonal antibody anti-Ataxin-1 (720-800) is suitable for use in Western Blot, Immunohistochemistry, Immunofluorescence, Immunocytochemistry and ELISA research applications.
<b>Applications</b>	WB, IHC-P, IF, ICC, ELISA
<b>Host/Source</b>	Rabbit
<b>Reactivity</b>	Human, Mouse

### PRODUCT PROPERTIES

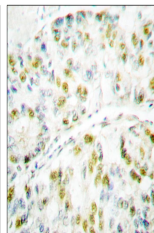
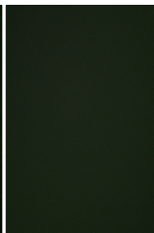
<b>Clonality</b>	Polyclonal
<b>Clone ID</b>	
<b>Concentration</b>	1 mg/mL
<b>Conjugation</b>	Unconjugated
<b>Purification</b>	The antibody was affinity-purified from rabbit anti-serum by affinity-chromatography.
<b>Dilution Range</b>	IHC 1:100-1:300 IF 1:200-1:1000 ELISA 1:5000
<b>Formulation</b>	PBS, 50% Glycerol, 0.5% BSA and 0.02% Sodium Azide.
<b>Isotype</b>	IgG
<b>Storage Instruction</b>	Store at -20°C for up to 1 year from the date of receipt, and avoid repeat freeze-thaw cycles.

### TARGET INFORMATION

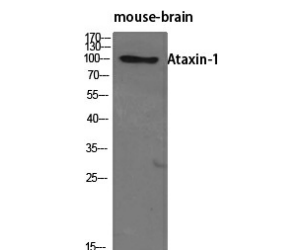
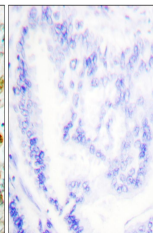
<b>Gene ID</b>	6310
<b>Gene Symbol</b>	ATXN1
<b>Uniprot ID</b>	ATX1_HUMAN
<b>Immunogen</b>	The antiserum was produced against synthesized peptide derived from human Ataxin 1 at amino acid range 742-791
<b>Immunogen Region</b>	720-800
<b>Specificity</b>	ATXN1 polyclonal antibody (Ataxin-1) binds to endogenous Ataxin-1 at the amino acid region 720-800.
<b>Immunogen Sequence</b>	



Immunofluorescence analysis of NIH/3T3 cells, using Ataxin 1 Antibody. The picture on the right is blocked with the synthesized peptide.



Immunohistochemistry analysis of paraffin-embedded human lung carcinoma tissue, using Ataxin 1 Antibody. The picture on the right is blocked with the synthesized peptide.



Western blot analysis of various cells using Ataxin-1 Polyclonal Antibody diluted at 1: 500