

Anti-ADRA1B antibody (410-490 C-Term) (STJ91721)

STJ91721

GENERAL INFORMATION

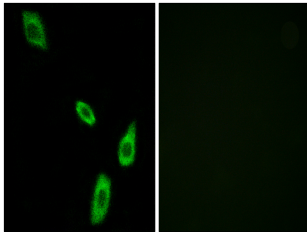
Product Type	Primary antibodies
Short Description	Rabbit polyclonal antibody anti-Alpha-1b Adrenergic Receptor (410-490 C-Term) is suitable for use in Western Blot, Immunofluorescence, Immunocytochemistry and ELISA research applications.
Applications	WB, IF, ICC, ELISA
Host/Source	Rabbit
Reactivity	Human, Mouse, Rat

PRODUCT PROPERTIES

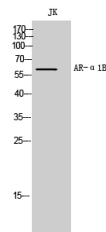
Clonality	Polyclonal
Clone ID	
Concentration	1 mg/mL
Conjugation	Unconjugated
Purification	The antibody was affinity-purified from rabbit anti-serum by affinity-chromatography.
Dilution Range	WB 1:500-1:2000 IF 1:200-1:1000 ELISA 1:20000
Formulation	PBS, 50% Glycerol, 0.5% BSA and 0.02% Sodium Azide.
Isotype	IgG
Storage Instruction	Store at -20°C for up to 1 year from the date of receipt, and avoid repeat freeze-thaw cycles.

TARGET INFORMATION

Gene ID	147
Gene Symbol	ADRA1B
Uniprot ID	ADA1B_HUMAN
Immunogen	The antiserum was produced against synthesized peptide derived from human ADRA1B at amino acid range 431-480
Immunogen Region	410-490 C-Term
Specificity	ADRA1B polyclonal antibody (Alpha-1b Adrenergic Receptor) binds to endogenous Alpha-1b Adrenergic Receptor at the amino acid region 410-490 C-Term.
Immunogen Sequence	



Immunofluorescence analysis of LOVO cells, using ADRA1B Antibody. The picture on the right is blocked with the synthesized peptide.



Western blot analysis of JK cells using AR-Alpha 1B Polyclonal Antibody

This product is suitable for in-vitro studies under the RESEARCH USE ONLY [RUO] licence. This product must not be used as for diagnostic or other medical purposes.
 St John's Laboratory Ltd, Knowledge Dock Business Centre, University Way, London, E16 2RD | Tel: 0208 223 3081