

Anti-ADRA1A antibody (310-390 C-Term) (STJ91720)

STJ91720

GENERAL INFORMATION

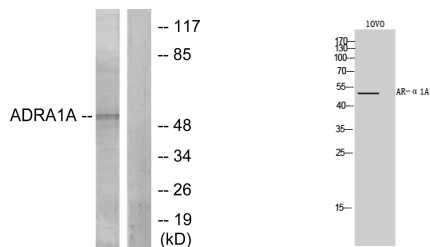
Product Type	Primary antibodies
Short Description	Rabbit polyclonal antibody anti-Alpha-1a Adrenergic Receptor (310-390 C-Term) is suitable for use in Western Blot, Immunohistochemistry, Immunofluorescence, Immunocytochemistry and ELISA research applications.
Applications	WB, IHC-P, IF, ICC, ELISA
Host/Source	Rabbit
Reactivity	Human, Rat, Mouse

PRODUCT PROPERTIES

Clonality	Polyclonal
Clone ID	
Concentration	1 mg/mL
Conjugation	Unconjugated
Purification	The antibody was affinity-purified from rabbit anti-serum by affinity-chromatography.
Dilution Range	WB 1:500-1:2000 IHC 1:100-1:300 IF 1:200-1:1000 ELISA 1:10000
Formulation	PBS, 50% Glycerol, 0.5% BSA and 0.02% Sodium Azide.
Isotype	IgG
Storage Instruction	Store at -20°C for up to 1 year from the date of receipt, and avoid repeat freeze-thaw cycles.

TARGET INFORMATION

Gene ID	148
Gene Symbol	ADRA1A
Uniprot ID	ADA1A_HUMAN
Immunogen	The antiserum was produced against synthesized peptide derived from human ADRA1A at amino acid range 341-390
Immunogen Region	310-390 C-Term
Specificity	ADRA1A polyclonal antibody (Alpha-1a Adrenergic Receptor) binds to endogenous Alpha-1a Adrenergic Receptor at the amino acid region 310-390 C-Term.
Immunogen Sequence	



Western blot analysis of lysates from IOVO cells, using ADRA1A Antibody. The lane on the right is blocked with the synthesized peptide.

Western blot analysis of IOVO cells using AR-Alpha 1A Polyclonal Antibody

This product is suitable for in-vitro studies under the RESEARCH USE ONLY [RUO] licence. This product must not be used as for diagnostic or other medical purposes.
St John's Laboratory Ltd, Knowledge Dock Business Centre, University Way, London, E16 2RD | Tel: 0208 223 3081