

## Anti-ADRA1A antibody (110-190 Internal) (STJ91719)

STJ91719

### GENERAL INFORMATION

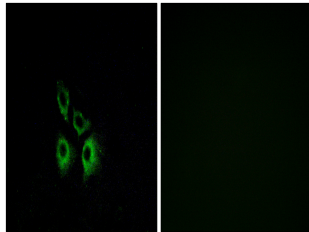
<b>Product Type</b>	Primary antibodies
<b>Short Description</b>	Rabbit polyclonal antibody anti-Alpha-1a Adrenergic Receptor (110-190 Internal) is suitable for use in Western Blot, Immunofluorescence, Immunocytochemistry and ELISA research applications.
<b>Applications</b>	WB, IF, ICC, ELISA
<b>Host/Source</b>	Rabbit
<b>Reactivity</b>	Human, Mouse, Rat

### PRODUCT PROPERTIES

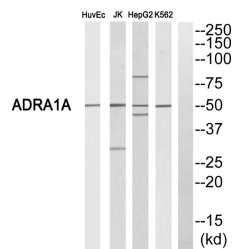
<b>Clonality</b>	Polyclonal
<b>Clone ID</b>	
<b>Concentration</b>	1 mg/mL
<b>Conjugation</b>	Unconjugated
<b>Purification</b>	The antibody was affinity-purified from rabbit anti-serum by affinity-chromatography.
<b>Dilution Range</b>	WB 1:500-1:2000 IF 1:200-1:1000 ELISA 1:10000
<b>Formulation</b>	PBS, 50% Glycerol, 0.5% BSA and 0.02% Sodium Azide.
<b>Isotype</b>	IgG
<b>Storage Instruction</b>	Store at -20°C for up to 1 year from the date of receipt, and avoid repeat freeze-thaw cycles.

### TARGET INFORMATION

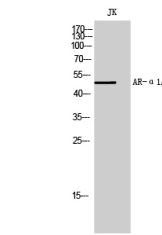
<b>Gene ID</b>	148
<b>Gene Symbol</b>	ADRA1A
<b>Uniprot ID</b>	ADA1A_HUMAN
<b>Immunogen</b>	The antiserum was produced against synthesized peptide derived from human ADRA1A at amino acid range 136-185
<b>Immunogen Region</b>	110-190 Internal
<b>Specificity</b>	ADRA1A polyclonal antibody (Alpha-1a Adrenergic Receptor) binds to endogenous Alpha-1a Adrenergic Receptor at the amino acid region 110-190 Internal.
<b>Immunogen Sequence</b>	



Immunofluorescence analysis of A549 cells, using ADRA1A Antibody. The picture on the right is blocked with the synthesized peptide.



Western blot analysis of ADRA1A Antibody. The lane on the right is blocked with the ADRA1A peptide.



Western blot analysis of JK cells using AR-Alpha 1A Polyclonal Antibody

This product is suitable for in-vitro studies under the RESEARCH USE ONLY [RUO] licence. This product must not be used as for diagnostic or other medical purposes.  
St John's Laboratory Ltd, Knowledge Dock Business Centre, University Way, London, E16 2RD | Tel: 0208 223 3081