

Anti-ARSG antibody (220-300 Internal) (STJ91716)

STJ91716

GENERAL INFORMATION

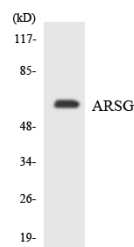
Product Type	Primary antibodies
Short Description	Rabbit polyclonal antibody anti-Arylsulfatase G (220-300 Internal) is suitable for use in Western Blot, Immunohistochemistry, Immunofluorescence and ELISA research applications.
Applications	WB, IHC-P, IF-P, ELISA
Host/Source	Rabbit
Reactivity	Human, Mouse, Rat

PRODUCT PROPERTIES

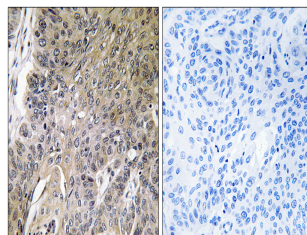
Clonality	Polyclonal
Clone ID	
Concentration	1 mg/mL
Conjugation	Unconjugated
Purification	The antibody was affinity-purified from rabbit anti-serum by affinity-chromatography.
Dilution Range	WB 1:500-1:2000 IHC 1:100-1:300 ELISA 1:40000
Formulation	PBS, 50% Glycerol, 0.5% BSA and 0.02% Sodium Azide.
Isotype	IgG
Storage Instruction	Store at -20°C for up to 1 year from the date of receipt, and avoid repeat freeze-thaw cycles.

TARGET INFORMATION

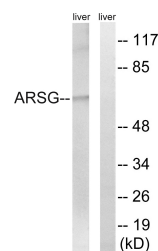
Gene ID	22901
Gene Symbol	ARSG
Uniprot ID	ARSG_HUMAN
Immunogen	The antiserum was produced against synthesized peptide derived from human ARSG at amino acid range 251-300
Immunogen Region	220-300 Internal
Specificity	ARSG polyclonal antibody (Arylsulfatase G) binds to endogenous Arylsulfatase G at the amino acid region 220-300 Internal.
Immunogen Sequence	



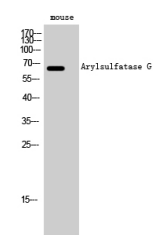
Western blot analysis of the lysates from HeLa cells using ARSG antibody.



Immunohistochemistry analysis of paraffin-embedded human lung carcinoma tissue, using ARSG Antibody. The picture on the right is blocked with the synthesized peptide.



Western blot analysis of lysates from mouse liver, using ARSG Antibody. The lane on the right is blocked with the synthesized peptide.



Western blot analysis of mouse cells using Arylsulfatase G Polyclonal Antibody

This product is suitable for in-vitro studies under the RESEARCH USE ONLY [RUO] licence. This product must not be used as for diagnostic or other medical purposes.
St John's Laboratory Ltd, Knowledge Dock Business Centre, University Way, London, E16 2RD | Tel: 0208 223 3081