

Anti-ARSF antibody (270-350 Internal) (STJ91715)

STJ91715

GENERAL INFORMATION

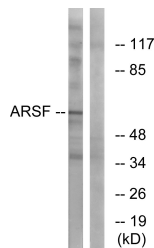
Product Type	Primary antibodies
Short Description	Rabbit polyclonal antibody anti-Arylsulfatase F (270-350 Internal) is suitable for use in Western Blot, Immunohistochemistry, Immunofluorescence and ELISA research applications.
Applications	WB, IHC-P, IF-P, ELISA
Host/Source	Rabbit
Reactivity	Human, Monkey

PRODUCT PROPERTIES

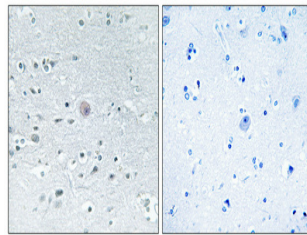
Clonality	Polyclonal
Clone ID	
Concentration	1 mg/mL
Conjugation	Unconjugated
Purification	The antibody was affinity-purified from rabbit anti-serum by affinity-chromatography.
Dilution Range	WB 1:500-1:2000 IHC 1:100-1:300 ELISA 1:40000
Formulation	PBS, 50% Glycerol, 0.5% BSA and 0.02% Sodium Azide.
Isotype	IgG
Storage Instruction	Store at -20°C for up to 1 year from the date of receipt, and avoid repeat freeze-thaw cycles.

TARGET INFORMATION

Gene ID	416
Gene Symbol	ARSF
Uniprot ID	ARSF_HUMAN
Immunogen	The antiserum was produced against synthesized peptide derived from human ARSF at amino acid range 301-350
Immunogen Region	270-350 Internal
Specificity	ARSF polyclonal antibody (Arylsulfatase F) binds to endogenous Arylsulfatase F at the amino acid region 270-350 Internal.
Immunogen Sequence	



Western blot analysis of lysates from COS7 cells, using ARSF Antibody. The lane on the right is blocked with the synthesized peptide.



Immunohistochemical analysis of paraffin-embedded Human brain. Antibody was diluted at 1:100 (4°C overnight). High-pressure and temperature Tris-EDTA, pH8.0 was used for antigen retrieval. Negative control (right) obtained from antibody was pre-adsorbed by immunogen peptide.