

## Anti-ARX antibody (250-330 Internal) (STJ91711)

STJ91711

### GENERAL INFORMATION

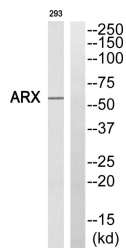
<b>Product Type</b>	Primary antibodies
<b>Short Description</b>	Rabbit polyclonal antibody anti-Homeobox Protein Arx (250-330 Internal) is suitable for use in Western Blot and ELISA research applications.
<b>Applications</b>	WB, ELISA
<b>Host/Source</b>	Rabbit
<b>Reactivity</b>	Human, Mouse, Rat

### PRODUCT PROPERTIES

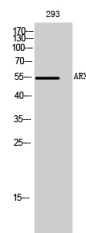
<b>Clonality</b>	Polyclonal
<b>Clone ID</b>	
<b>Concentration</b>	1 mg/mL
<b>Conjugation</b>	Unconjugated
<b>Purification</b>	The antibody was affinity-purified from rabbit anti-serum by affinity-chromatography.
<b>Dilution Range</b>	WB 1:500-1:2000 ELISA 1:5000
<b>Formulation</b>	PBS, 50% Glycerol, 0.5% BSA and 0.02% Sodium Azide.
<b>Isotype</b>	IgG
<b>Storage Instruction</b>	Store at -20°C for up to 1 year from the date of receipt, and avoid repeat freeze-thaw cycles.

### TARGET INFORMATION

<b>Gene ID</b>	170302
<b>Gene Symbol</b>	ARX
<b>Uniprot ID</b>	ARX_HUMAN
<b>Immunogen</b>	Synthesized peptide derived from ARX. at amino acid range: 250-330
<b>Immunogen Region</b>	250-330 Internal
<b>Specificity</b>	ARX polyclonal antibody (Homeobox Protein Arx) binds to endogenous Homeobox Protein Arx at the amino acid region 250-330 Internal.
<b>Immunogen Sequence</b>	



Western blot analysis of ARX Antibody. The lane on the right is blocked with the ARX peptide.



Western blot analysis of 293 cells using ARX Polyclonal Antibody cells nucleus extracted by Minute™ Cytoplasmic and Nuclear Fractionation kit (SC-003, InventiBiotech, MN, USA).

This product is suitable for in-vitro studies under the RESEARCH USE ONLY [RUO] licence. This product must not be used as for diagnostic or other medical purposes.  
St John's Laboratory Ltd, Knowledge Dock Business Centre, University Way, London, E16 2RD | Tel: 0208 223 3081