

Anti-ARRB1 antibody (350-430) (STJ91708)

STJ91708

GENERAL INFORMATION

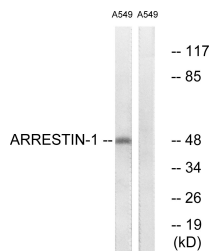
Product Type	Primary antibodies
Short Description	Rabbit polyclonal antibody anti-Beta-Arrestin-1 (350-430) is suitable for use in Western Blot, Immunohistochemistry, Immunofluorescence, Immunocytochemistry and ELISA research applications.
Applications	WB, IHC-P, IF, ICC, ELISA
Host/Source	Rabbit
Reactivity	Human, Monkey

PRODUCT PROPERTIES

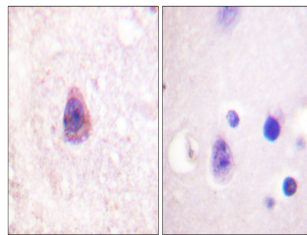
Clonality	Polyclonal
Clone ID	
Concentration	1 mg/mL
Conjugation	Unconjugated
Purification	The antibody was affinity-purified from rabbit anti-serum by affinity-chromatography.
Dilution Range	WB 1:500-1:2000 IHC 1:100-1:300 IF 1:200-1:1000 ELISA 1:10000
Formulation	PBS, 50% Glycerol, 0.5% BSA and 0.02% Sodium Azide.
Isotype	IgG
Storage Instruction	Store at -20°C for up to 1 year from the date of receipt, and avoid repeat freeze-thaw cycles.

TARGET INFORMATION

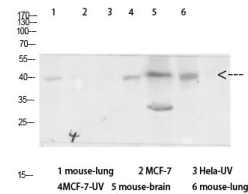
Gene ID	408
Gene Symbol	ARRB1
Uniprot ID	ARRB1_HUMAN
Immunogen	The antiserum was produced against synthesized peptide derived from human Arrestin 1 at amino acid range 369-418
Immunogen Region	350-430
Specificity	ARRB1 polyclonal antibody (Beta-Arrestin-1) binds to endogenous Beta-Arrestin-1 at the amino acid region 350-430.
Immunogen Sequence	



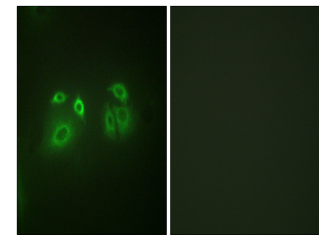
Western blot analysis of lysates from A549 cells, treated with Etoposide 25uM 60', using Arrestin 1 Antibody. The lane on the right is blocked with the synthesized peptide.



Immunohistochemistry analysis of paraffin-embedded human brain tissue, using Arrestin 1 Antibody. The picture on the right is blocked with the synthesized peptide.



Western blot analysis of various cells using Antibody diluted at 1:1000. Secondary antibody was diluted at 1:20000.



Immunofluorescence analysis of A549 cells, using Arrestin 1 Antibody. The picture on the right is blocked with the synthesized peptide.