

## Anti-ARRDC2 antibody (110-190 Internal) (STJ91704)

STJ91704

### GENERAL INFORMATION

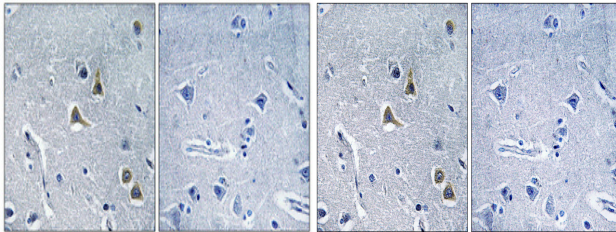
<b>Product Type</b>	Primary antibodies
<b>Short Description</b>	Rabbit polyclonal antibody anti-Arrestin Domain-Containing Protein 2 (110-190 Internal) is suitable for use in Western Blot, Immunohistochemistry, Immunofluorescence and ELISA research applications.
<b>Applications</b>	WB, IHC-P, IF-P, ELISA
<b>Host/Source</b>	Rabbit
<b>Reactivity</b>	Human, Mouse

### PRODUCT PROPERTIES

<b>Clonality</b>	Polyclonal
<b>Clone ID</b>	
<b>Concentration</b>	1 mg/mL
<b>Conjugation</b>	Unconjugated
<b>Purification</b>	The antibody was affinity-purified from rabbit anti-serum by affinity-chromatography.
<b>Dilution Range</b>	WB 1:500-1:2000 IHC 1:100-1:300 ELISA 1:40000
<b>Formulation</b>	PBS, 50% Glycerol, 0.5% BSA and 0.02% Sodium Azide.
<b>Isotype</b>	IgG
<b>Storage Instruction</b>	Store at -20°C for up to 1 year from the date of receipt, and avoid repeat freeze-thaw cycles.

### TARGET INFORMATION

<b>Gene ID</b>	27106
<b>Gene Symbol</b>	ARRDC2
<b>Uniprot ID</b>	ARRD2_HUMAN
<b>Immunogen</b>	The antiserum was produced against synthesized peptide derived from human ARRDC2 at amino acid range 141-190
<b>Immunogen Region</b>	110-190 Internal
<b>Specificity</b>	ARRDC2 polyclonal antibody (Arrestin Domain-Containing Protein 2) binds to endogenous Arrestin Domain-Containing Protein 2 at the amino acid region 110-190 Internal.
<b>Immunogen Sequence</b>	



Immunohistochemical analysis of paraffin-embedded Human brain. Antibody was diluted at 1:100 (4°C overnight). High-pressure and temperature Tris-EDTA, pH8.0 was used for antigen retrieval. Negative control (right) obtained from antibody was pre-absorbed by immunogen peptide.

Immunohistochemistry analysis of paraffin-embedded human brain tissue, using ARRDC2 Antibody. The picture on the right is blocked with the synthesized peptide.



Western blot analysis of various cells using ARRDC2 Polyclonal Antibody

This product is suitable for in-vitro studies under the RESEARCH USE ONLY [RUO] licence. This product must not be used as for diagnostic or other medical purposes.  
St John's Laboratory Ltd, Knowledge Dock Business Centre, University Way, London, E16 2RD | Tel: 0208 223 3081