

Anti-ARPP21 antibody (180-260 Internal) (STJ91702)

STJ91702

GENERAL INFORMATION

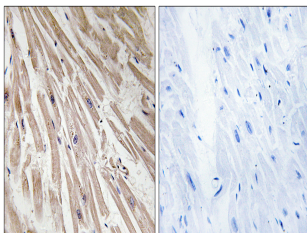
Product Type	Primary antibodies
Short Description	Rabbit polyclonal antibody anti-Camp-Regulated Phosphoprotein 21 (180-260 Internal) is suitable for use in Western Blot, Immunohistochemistry, Immunofluorescence and ELISA research applications.
Applications	WB, IHC-P, IF-P, ELISA
Host/Source	Rabbit
Reactivity	Human, Mouse

PRODUCT PROPERTIES

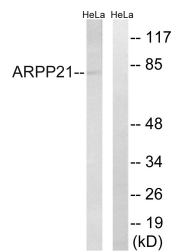
Clonality	Polyclonal
Clone ID	
Concentration	1 mg/mL
Conjugation	Unconjugated
Purification	The antibody was affinity-purified from rabbit anti-serum by affinity-chromatography.
Dilution Range	WB 1:500-1:2000 IHC 1:100-1:300 ELISA 1:5000
Formulation	PBS, 50% Glycerol, 0.5% BSA and 0.02% Sodium Azide.
Isotype	IgG
Storage Instruction	Store at -20°C for up to 1 year from the date of receipt, and avoid repeat freeze-thaw cycles.

TARGET INFORMATION

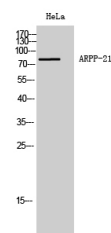
Gene ID	10777
Gene Symbol	ARPP21
Uniprot ID	ARPP21_HUMAN
Immunogen	The antiserum was produced against synthesized peptide derived from human ARPP21 at amino acid range 211-260
Immunogen Region	180-260 Internal
Specificity	ARPP21 polyclonal antibody (Camp-Regulated Phosphoprotein 21) binds to endogenous Camp-Regulated Phosphoprotein 21 at the amino acid region 180-260 Internal.
Immunogen Sequence	



Immunohistochemistry analysis of paraffin-embedded human heart tissue, using ARPP21 Antibody. The picture on the right is blocked with the synthesized peptide.



Western blot analysis of lysates from HeLa cells, using ARPP21 Antibody. The lane on the right is blocked with the synthesized peptide.



Western blot analysis of HeLa cells using ARPP21 Polyclonal Antibody diluted at 1: 1000