

Anti-ARMC6 antibody (400-480 C-Term) (STJ91695)

STJ91695

GENERAL INFORMATION

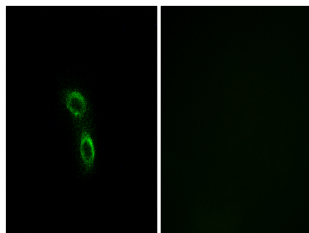
Product Type	Primary antibodies
Short Description	Rabbit polyclonal antibody anti-Armadillo Repeat-Containing Protein 6 (400-480 C-Term) is suitable for use in Western Blot, Immunofluorescence, Immunocytochemistry and ELISA research applications.
Applications	WB, IF, ICC, ELISA
Host/Source	Rabbit
Reactivity	Human, Mouse, Rat

PRODUCT PROPERTIES

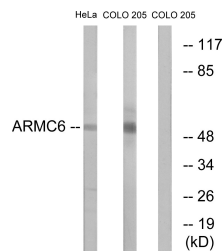
Clonality	Polyclonal
Clone ID	
Concentration	1 mg/mL
Conjugation	Unconjugated
Purification	The antibody was affinity-purified from rabbit anti-serum by affinity-chromatography.
Dilution Range	WB 1:500-1:2000 IF 1:200-1:1000 ELISA 1:40000
Formulation	PBS, 50% Glycerol, 0.5% BSA and 0.02% Sodium Azide.
Isotype	IgG
Storage Instruction	Store at 20°C for up to 1 year from the date of receipt, and avoid repeat freeze-thaw cycles.

TARGET INFORMATION

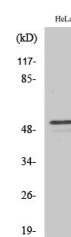
Gene ID	93436
Gene Symbol	ARMC6
Uniprot ID	ARMC6_HUMAN
Immunogen	The antiserum was produced against synthesized peptide derived from human ARMC6 at amino acid range 431-480
Immunogen Region	400-480 C-Term
Specificity	ARMC6 polyclonal antibody (Armadillo Repeat-Containing Protein 6) binds to endogenous Armadillo Repeat-Containing Protein 6 at the amino acid region 400-480 C-Term.
Immunogen Sequence	



Immunofluorescence analysis of A549 cells, using ARMC6 Antibody. The picture on the right is blocked with the synthesized peptide.



Western blot analysis of lysates from HeLa and COLO cells, using ARMC6 Antibody. The lane on the right is blocked with the synthesized peptide.



Western blot analysis of various cells using ARMC6 Polyclonal Antibody

This product is suitable for in-vitro studies under the RESEARCH USE ONLY [RUO] licence. This product must not be used as for diagnostic or other medical purposes.
St John's Laboratory Ltd, Knowledge Dock Business Centre, University Way, London, E16 2RD | Tel: 0208 223 3081