

Anti-ARHGEF19 antibody (220-300 Internal) (STJ91688)

STJ91688

GENERAL INFORMATION

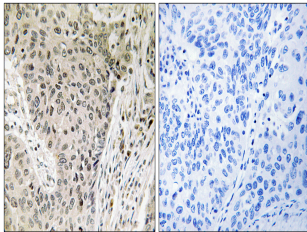
Product Type	Primary antibodies
Short Description	Rabbit polyclonal antibody anti-Rho Guanine Nucleotide Exchange Factor 19 (220-300 Internal) is suitable for use in Western Blot, Immunohistochemistry, Immunofluorescence and ELISA research applications.
Applications	WB, IHC-P, IF-P, ELISA
Host/Source	Rabbit
Reactivity	Human, Rat, Mouse

PRODUCT PROPERTIES

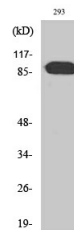
Clonality	Polyclonal
Clone ID	
Concentration	1 mg/mL
Conjugation	Unconjugated
Purification	The antibody was affinity-purified from rabbit anti-serum by affinity-chromatography.
Dilution Range	WB 1:500-1:2000 IHC 1:100-1:300 ELISA 1:20000
Formulation	PBS, 50% Glycerol, 0.5% BSA and 0.02% Sodium Azide.
Isotype	IgG
Storage Instruction	Store at -20°C for up to 1 year from the date of receipt, and avoid repeat freeze-thaw cycles.

TARGET INFORMATION

Gene ID	128272
Gene Symbol	ARHGEF19
Uniprot ID	ARHGJ_HUMAN
Immunogen	The antiserum was produced against synthesized peptide derived from human ARHGEF19 at amino acid range 251-300
Immunogen Region	220-300 Internal
Specificity	ARHGEF19 polyclonal antibody (Rho Guanine Nucleotide Exchange Factor 19) binds to endogenous Rho Guanine Nucleotide Exchange Factor 19 at the amino acid region 220-300 Internal.
Immunogen Sequence	



Immunohistochemistry analysis of paraffin-embedded human lung carcinoma, using ARHGEF19 Antibody. The picture on the right is blocked with the synthesized peptide.



Western blot analysis of various cells using ARHGEF19 Polyclonal Antibody