

Anti-ARHGEF10 antibody (310-390 Internal) (STJ91686)

STJ91686

GENERAL INFORMATION

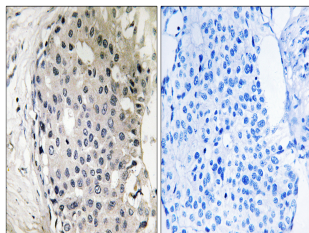
| | |
|--------------------------|---|
| Product Type | Primary antibodies |
| Short Description | Rabbit polyclonal antibody anti-Rho Guanine Nucleotide Exchange Factor 10 (310-390 Internal) is suitable for use in Western Blot, Immunohistochemistry, Immunofluorescence and ELISA research applications. |
| Applications | WB, IHC-P, IF-P, ELISA |
| Host/Source | Rabbit |
| Reactivity | Human, Monkey |

PRODUCT PROPERTIES

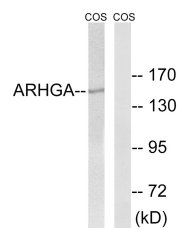
| | |
|----------------------------|--|
| Clonality | Polyclonal |
| Clone ID | |
| Concentration | 1 mg/mL |
| Conjugation | Unconjugated |
| Purification | The antibody was affinity-purified from rabbit anti-serum by affinity-chromatography. |
| Dilution Range | WB 1:500-1:2000 IHC 1:100-1:300 ELISA 1:20000 |
| Formulation | PBS, 50% Glycerol, 0.5% BSA and 0.02% Sodium Azide. |
| Isotype | IgG |
| Storage Instruction | Store at -20°C for up to 1 year from the date of receipt, and avoid repeat freeze-thaw cycles. |

TARGET INFORMATION

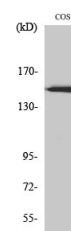
| | |
|---------------------------|---|
| Gene ID | 9639 |
| Gene Symbol | ARHGEF10 |
| Uniprot ID | ARHGA_HUMAN |
| Immunogen | The antiserum was produced against synthesized peptide derived from human ARHGEF10 at amino acid range 339-388 |
| Immunogen Region | 310-390 Internal |
| Specificity | ARHGEF10 polyclonal antibody (Rho Guanine Nucleotide Exchange Factor 10) binds to endogenous Rho Guanine Nucleotide Exchange Factor 10 at the amino acid region 310-390 Internal. |
| Immunogen Sequence | |



Immunohistochemistry analysis of paraffin-embedded human breast carcinoma tissue, using ARHGEF10 Antibody. The picture on the right is blocked with the synthesized peptide.



Western blot analysis of lysates from COS7 cells, using ARHGEF10 Antibody. The lane on the right is blocked with the synthesized peptide.



Western blot analysis of various cells using ARHGEF10 Polyclonal Antibody