

Anti-ARHGAP9 antibody (190-270 Internal) (STJ91685)

STJ91685

GENERAL INFORMATION

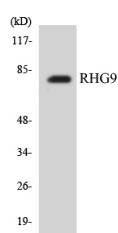
Product Type	Primary antibodies
Short Description	Rabbit polyclonal antibody anti-Rho Gtpase-Activating Protein 9 (190-270 Internal) is suitable for use in Western Blot, Immunohistochemistry, Immunofluorescence and ELISA research applications.
Applications	WB, IHC-P, IF-P, ELISA
Host/Source	Rabbit
Reactivity	Human, Rat, Mouse

PRODUCT PROPERTIES

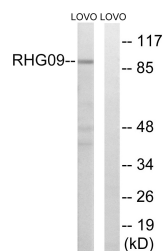
Clonality	Polyclonal
Clone ID	
Concentration	1 mg/mL
Conjugation	Unconjugated
Purification	The antibody was affinity-purified from rabbit anti-serum by affinity-chromatography.
Dilution Range	WB 1:500-1:2000 IHC 1:100-1:300 ELISA 1:40000
Formulation	PBS, 50% Glycerol, 0.5% BSA and 0.02% Sodium Azide.
Isotype	IgG
Storage Instruction	Store at -20°C for up to 1 year from the date of receipt, and avoid repeat freeze-thaw cycles.

TARGET INFORMATION

Gene ID	64333
Gene Symbol	ARHGAP9
Uniprot ID	RHG09_HUMAN
Immunogen Region	The antiserum was produced against synthesized peptide derived from human RHG9 at amino acid range 220-269
Immunogen Region	190-270 Internal
Specificity	ARHGAP9 polyclonal antibody (Rho Gtpase-Activating Protein 9) binds to endogenous Rho Gtpase-Activating Protein 9 at the amino acid region 190-270 Internal.
Immunogen Sequence	



Western blot analysis of the lysates from COLO205 cells using RHG9 antibody.



Western blot analysis of lysates from LOVO cells, using RHG9 Antibody. The lane on the right is blocked with the synthesized peptide.