

Anti-ARHGAP18 antibody (490-570 C-Term) (STJ91682)

STJ91682

GENERAL INFORMATION

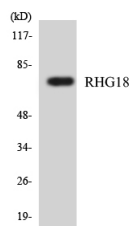
Product Type	Primary antibodies
Short Description	Rabbit polyclonal antibody anti-Rho Gtpase-Activating Protein 18 (490-570 C-Term) is suitable for use in Western Blot, Immunohistochemistry, Immunofluorescence and ELISA research applications.
Applications	WB, IHC-P, IF-P, ELISA
Host/Source	Rabbit
Reactivity	Human, Rat, Mouse

PRODUCT PROPERTIES

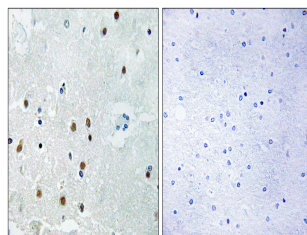
Clonality	Polyclonal
Clone ID	
Concentration	1 mg/mL
Conjugation	Unconjugated
Purification	The antibody was affinity-purified from rabbit anti-serum by affinity-chromatography.
Dilution Range	WB 1:500-1:2000 IHC 1:100-1:300 ELISA 1:40000
Formulation	PBS, 50% Glycerol, 0.5% BSA and 0.02% Sodium Azide.
Isotype	IgG
Storage Instruction	Store at -20°C for up to 1 year from the date of receipt, and avoid repeat freeze-thaw cycles.

TARGET INFORMATION

Gene ID	93663
Gene Symbol	ARHGAP18
Uniprot ID	RHG18_HUMAN
Immunogen	The antiserum was produced against synthesized peptide derived from human RHG18 at amino acid range 517-566
Immunogen Region	490-570 C-Term
Specificity	ARHGAP18 polyclonal antibody (Rho Gtpase-Activating Protein 18) binds to endogenous Rho Gtpase-Activating Protein 18 at the amino acid region 490-570 C-Term.
Immunogen Sequence	



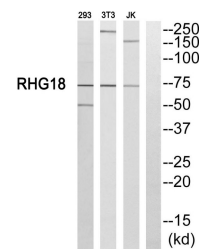
Western blot analysis of the lysates from HepG2 cells using RHG18 antibody.



Immunohistochemistry analysis of paraffin-embedded human brain, using RHG18 Antibody. The lane on the right is blocked with the RHG18 peptide.



Western blot analysis of Jurkat cells using ARHGAP18 Polyclonal Antibody



Western blot analysis of RHG18 Antibody. The lane on the right is blocked with the RHG18 peptide.

This product is suitable for in-vitro studies under the RESEARCH USE ONLY [RUO] licence. This product must not be used as for diagnostic or other medical purposes.
St John's Laboratory Ltd, Knowledge Dock Business Centre, University Way, London, E16 2RD | Tel: 0208 223 3081