

Anti-ARHGAP17 antibody (300-380 Internal) (STJ91681)

STJ91681

GENERAL INFORMATION

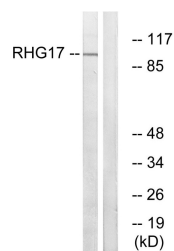
Product Type	Primary antibodies
Short Description	Rabbit polyclonal antibody anti-Rho Gtpase-Activating Protein 17 (300-380 Internal) is suitable for use in Western Blot and ELISA research applications.
Applications	WB, ELISA
Host/Source	Rabbit
Reactivity	Human, Mouse, Rat

PRODUCT PROPERTIES

Clonality	Polyclonal
Clone ID	
Concentration	1 mg/mL
Conjugation	Unconjugated
Purification	The antibody was affinity-purified from rabbit anti-serum by affinity-chromatography.
Dilution Range	WB 1:500-1:2000 ELISA 1:40000
Formulation	PBS, 50% Glycerol, 0.5% BSA and 0.02% Sodium Azide.
Isotype	IgG
Storage Instruction	Store at -20°C for up to 1 year from the date of receipt, and avoid repeat freeze-thaw cycles.

TARGET INFORMATION

Gene ID	55114
Gene Symbol	ARHGAP17
Uniprot ID	RHG17_HUMAN
Immunogen	The antiserum was produced against synthesized peptide derived from human RHG17 at amino acid range 331-380
Immunogen Region	300-380 Internal
Specificity	ARHGAP17 polyclonal antibody (Rho Gtpase-Activating Protein 17) binds to endogenous Rho Gtpase-Activating Protein 17 at the amino acid region 300-380 Internal.
Immunogen Sequence	



Western blot analysis of lysates from LOVO cells, using RHG17 Antibody. The lane on the right is blocked with the synthesized peptide.