

Anti-ARHGAP11A antibody (440-520 Internal) (STJ91679)

STJ91679

GENERAL INFORMATION

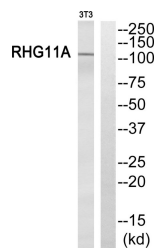
Product Type	Primary antibodies
Short Description	Rabbit polyclonal antibody anti-Rho Gtpase-Activating Protein 11a (440-520 Internal) is suitable for use in Western Blot and ELISA research applications.
Applications	WB, ELISA
Host/Source	Rabbit
Reactivity	Human, Rat, Mouse

PRODUCT PROPERTIES

Clonality	Polyclonal
Clone ID	
Concentration	1 mg/mL
Conjugation	Unconjugated
Purification	The antibody was affinity-purified from rabbit anti-serum by affinity-chromatography.
Dilution Range	WB 1:500-1:2000 ELISA 1:40000
Formulation	PBS, 50% Glycerol, 0.5% BSA and 0.02% Sodium Azide.
Isotype	IgG
Storage Instruction	Store at -20°C for up to 1 year from the date of receipt, and avoid repeat freeze-thaw cycles.

TARGET INFORMATION

Gene ID	9824
Gene Symbol	ARHGAP11A
Uniprot ID	RHGBA_HUMAN
Immunogen	The antiserum was produced against synthesized peptide derived from human ARHGAP11A at amino acid range 471-520
Immunogen Region	440-520 Internal
Specificity	ARHGAP11A polyclonal antibody (Rho Gtpase-Activating Protein 11a) binds to endogenous Rho Gtpase-Activating Protein 11a at the amino acid region 440-520 Internal.
Immunogen Sequence	



Western blot analysis of ARHGAP11A Antibody. The lane on the right is blocked with the ARHGAP11A peptide.