

Anti-ARG2 antibody (280-360 C-Term) (STJ91677)

STJ91677

GENERAL INFORMATION

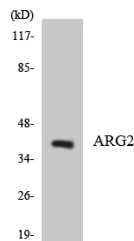
Product Type	Primary antibodies
Short Description	Rabbit polyclonal antibody anti-Arginase-2-Mitochondrial (280-360 C-Term) is suitable for use in Western Blot and ELISA research applications.
Applications	WB, ELISA
Host/Source	Rabbit
Reactivity	Human, Rat, Mouse

PRODUCT PROPERTIES

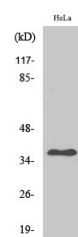
Clonality	Polyclonal
Clone ID	
Concentration	1 mg/mL
Conjugation	Unconjugated
Purification	The antibody was affinity-purified from rabbit anti-serum by affinity-chromatography.
Dilution Range	WB 1:500-1:2000 ELISA 1:5000
Formulation	PBS, 50% Glycerol, 0.5% BSA and 0.02% Sodium Azide.
Isotype	IgG
Storage Instruction	Store at -20°C for up to 1 year from the date of receipt, and avoid repeat freeze-thaw cycles.

TARGET INFORMATION

Gene ID	384
Gene Symbol	ARG2
Uniprot ID	ARGI2_HUMAN
Immunogen	The antiserum was produced against synthesized peptide derived from human ARG2 at amino acid range 305-354
Immunogen Region	280-360 C-Term
Specificity	ARG2 polyclonal antibody (Arginase-2-Mitochondrial) binds to endogenous Arginase-2-Mitochondrial at the amino acid region 280-360 C-Term.
Immunogen Sequence	



Western blot analysis of the lysates from HeLa cells using ARG2 antibody.



Western blot analysis of various cells using Arginase II Polyclonal Antibody

This product is suitable for in-vitro studies under the RESEARCH USE ONLY [RUO] licence. This product must not be used as for diagnostic or other medical purposes.
St John's Laboratory Ltd, Knowledge Dock Business Centre, University Way, London, E16 2RD | Tel: 0208 223 3081