

Anti-ARF6 antibody (30-110 Internal) (STJ91674)

STJ91674

GENERAL INFORMATION

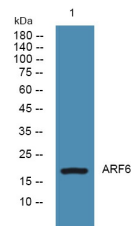
| | |
|--------------------------|--|
| Product Type | Primary antibodies |
| Short Description | Rabbit polyclonal antibody anti-Adp-Ribosylation Factor 6 (30-110 Internal) is suitable for use in Western Blot and ELISA research applications. |
| Applications | WB, ELISA |
| Host/Source | Rabbit |
| Reactivity | Human, Mouse, Rat |

PRODUCT PROPERTIES

| | |
|----------------------------|--|
| Clonality | Polyclonal |
| Clone ID | |
| Concentration | 1 mg/mL |
| Conjugation | Unconjugated |
| Purification | The antibody was affinity-purified from rabbit anti-serum by affinity-chromatography. |
| Dilution Range | WB 1:500-1:2000 ELISA 1:10000 |
| Formulation | PBS, 50% Glycerol, 0.5% BSA and 0.02% Sodium Azide. |
| Isotype | IgG |
| Storage Instruction | Store at -20°C for up to 1 year from the date of receipt, and avoid repeat freeze-thaw cycles. |

TARGET INFORMATION

| | |
|---------------------------|--|
| Gene ID | 382 |
| Gene Symbol | ARF6 |
| Uniprot ID | ARF6_HUMAN |
| Immunogen | Synthesized peptide derived from ARF6. at amino acid range: 30-110 |
| Immunogen Region | 30-110 Internal |
| Specificity | ARF6 polyclonal antibody (Adp-Ribosylation Factor 6) binds to endogenous Adp-Ribosylation Factor 6 at the amino acid region 30-110 Internal. |
| Immunogen Sequence | |



Western blot analysis of lysates from DU145 cells. primary antibody was diluted at 1:1000, 4°C over night