

## Anti-SLC25A12 antibody (360-440 Internal) (STJ91670)

STJ91670

### GENERAL INFORMATION

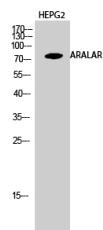
<b>Product Type</b>	Primary antibodies
<b>Short Description</b>	Rabbit polyclonal antibody anti-Calcium-Binding Mitochondrial Carrier Protein Aralar1 (360-440 Internal) is suitable for use in Western Blot, Immunohistochemistry, Immunofluorescence and ELISA research applications.
<b>Applications</b>	WB, IHC-P, IF-P, ELISA
<b>Host/Source</b>	Rabbit
<b>Reactivity</b>	Human, Rat, Mouse

### PRODUCT PROPERTIES

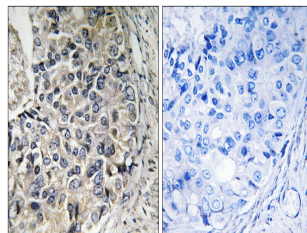
<b>Clonality</b>	Polyclonal
<b>Clone ID</b>	
<b>Concentration</b>	1 mg/mL
<b>Conjugation</b>	Unconjugated
<b>Purification</b>	The antibody was affinity-purified from rabbit anti-serum by affinity-chromatography.
<b>Dilution Range</b>	WB 1:500-1:2000 IHC 1:100-1:300 ELISA 1:20000
<b>Formulation</b>	PBS, 50% Glycerol, 0.5% BSA and 0.02% Sodium Azide.
<b>Isotype</b>	IgG
<b>Storage Instruction</b>	Store at -20°C for up to 1 year from the date of receipt, and avoid repeat freeze-thaw cycles.

### TARGET INFORMATION

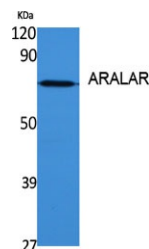
<b>Gene ID</b>	8604
<b>Gene Symbol</b>	SLC25A12
<b>Uniprot ID</b>	CMC1_HUMAN
<b>Immunogen</b>	The antiserum was produced against synthesized peptide derived from human CMC1 at amino acid range 391-440
<b>Immunogen Region</b>	360-440 Internal
<b>Specificity</b>	SLC25A12 polyclonal antibody (Calcium-Binding Mitochondrial Carrier Protein Aralar1) binds to endogenous Calcium-Binding Mitochondrial Carrier Protein Aralar1 at the amino acid region 360-440 Internal.
<b>Immunogen Sequence</b>	



Western blot analysis of HEPG2 cells using ARALAR Polyclonal Antibody diluted at 1: 1000



Immunohistochemistry analysis of paraffin-embedded human prostate carcinoma tissue, using CMC1 Antibody. The picture on the right is blocked with the synthesized peptide.



Western blot analysis of various cells using ARALAR Polyclonal Antibody diluted at 1: 1000

This product is suitable for in-vitro studies under the RESEARCH USE ONLY [RUO] licence. This product must not be used as for diagnostic or other medical purposes.  
St John's Laboratory Ltd, Knowledge Dock Business Centre, University Way, London, E16 2RD | Tel: 0208 223 3081