

Anti-AR antibody (590-670) (STJ91659)

STJ91659

GENERAL INFORMATION

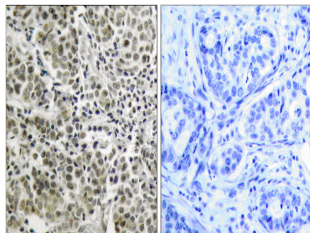
Product Type	Primary antibodies
Short Description	Rabbit polyclonal antibody anti-Androgen Receptor (590-670) is suitable for use in Western Blot, Immunohistochemistry, Immunofluorescence and ELISA research applications.
Applications	WB, IHC-P, IF-P, ELISA
Host/Source	Rabbit
Reactivity	Human, Rat, Mouse

PRODUCT PROPERTIES

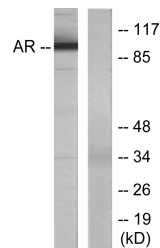
Clonality	Polyclonal
Clone ID	
Concentration	1 mg/mL
Conjugation	Unconjugated
Purification	The antibody was affinity-purified from rabbit anti-serum by affinity-chromatography.
Dilution Range	WB 1:500-1:2000 IHC 1:100-1:300 ELISA 1:40000
Formulation	PBS, 50% Glycerol, 0.5% BSA and 0.02% Sodium Azide.
Isotype	IgG
Storage Instruction	Store at -20°C for up to 1 year from the date of receipt, and avoid repeat freeze-thaw cycles.

TARGET INFORMATION

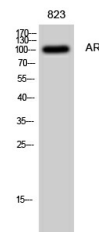
Gene ID	367
Gene Symbol	AR
Uniprot ID	ANDR_HUMAN
Immunogen	The antiserum was produced against synthesized peptide derived from human Androgen Receptor at amino acid range 621-670
Immunogen Region	590-670
Specificity	AR polyclonal antibody (Androgen Receptor) binds to endogenous Androgen Receptor at the amino acid region 590-670.
Immunogen Sequence	



Immunohistochemistry analysis of paraffin-embedded human prostate carcinoma tissue, using Androgen Receptor Antibody. The picture on the right is blocked with the synthesized peptide.



Western blot analysis of lysates from LOVO cells, using Androgen Receptor Antibody. The lane on the right is blocked with the synthesized peptide.



Western blot analysis of 823 cells using AR Polyclonal Antibody diluted at 1: 500

This product is suitable for in-vitro studies under the RESEARCH USE ONLY [RUO] licence. This product must not be used as for diagnostic or other medical purposes.
St John's Laboratory Ltd, Knowledge Dock Business Centre, University Way, London, E16 2RD | Tel: 0208 223 3081