

Anti-AQP12 antibody (200-280 C-Term) (STJ91654)

STJ91654

GENERAL INFORMATION

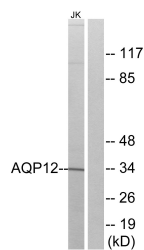
Product Type	Primary antibodies
Short Description	Rabbit polyclonal antibody anti-Aquaporin-12A and Aquaporin-12B (200-280 C-Term) is suitable for use in Western Blot and ELISA research applications.
Applications	WB, ELISA
Host/Source	Rabbit
Reactivity	Human, Rat, Mouse

PRODUCT PROPERTIES

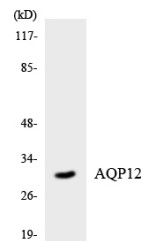
Clonality	Polyclonal
Clone ID	
Concentration	1 mg/mL
Conjugation	Unconjugated
Purification	The antibody was affinity-purified from rabbit anti-serum by affinity-chromatography.
Dilution Range	WB 1:500-1:2000 ELISA 1:40000
Formulation	PBS, 50% Glycerol, 0.5% BSA and 0.02% Sodium Azide.
Isotype	IgG
Storage Instruction	Store at -20°C for up to 1 year from the date of receipt, and avoid repeat freeze-thaw cycles.

TARGET INFORMATION

Gene ID	375318 653437
Gene Symbol	AQP12A AQP12B
Uniprot ID	AQ12A_HUMAN AQ12B_HUMAN
Immunogen Region	The antiserum was produced against synthesized peptide derived from human AQP12 at amino acid range 231-280 200-280 C-Term
Specificity	AQP12 polyclonal antibody (Aquaporin-12A and Aquaporin-12B) binds to endogenous Aquaporin-12A and Aquaporin-12B at the amino acid region 200-280 C-Term.
Immunogen Sequence	



Western blot analysis of lysates from Jurkat cells, using AQP12 Antibody. The lane on the right is blocked with the synthesized peptide.



Western blot analysis of the lysates from HUVEC cells using AQP12 antibody.



Western blot analysis of various cells using AQP12 Polyclonal Antibody diluted at 1: 1000

This product is suitable for in-vitro studies under the RESEARCH USE ONLY [RUO] licence. This product must not be used as for diagnostic or other medical purposes.
St John's Laboratory Ltd, Knowledge Dock Business Centre, University Way, London, E16 2RD | Tel: 0208 223 3081