

Anti-MIP antibody (Internal) (STJ91651)

STJ91651

GENERAL INFORMATION

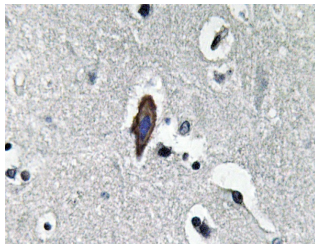
Product Type	Primary antibodies
Short Description	Rabbit polyclonal antibody anti-Lens Fiber Major Intrinsic Protein (Internal) is suitable for use in Western Blot, Immunohistochemistry, Immunofluorescence and ELISA research applications.
Applications	WB, IHC-P, IF-P, ELISA
Host/Source	Rabbit
Reactivity	Human, Mouse, Rat

PRODUCT PROPERTIES

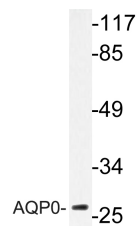
Clonality	Polyclonal
Clone ID	
Concentration	1 mg/mL
Conjugation	Unconjugated
Purification	The antibody was affinity-purified from rabbit anti-serum by affinity-chromatography.
Dilution Range	WB 1:500-1:2000 IHC 1:100-1:300 ELISA 1:5000
Formulation	PBS, 50% Glycerol, 0.5% BSA and 0.02% Sodium Azide.
Isotype	IgG
Storage Instruction	Store at -20°C for up to 1 year from the date of receipt, and avoid repeat freeze-thaw cycles.

TARGET INFORMATION

Gene ID	4284
Gene Symbol	MIP
Uniprot ID	MIP_HUMAN
Immunogen	The antiserum was produced against synthesized peptide derived from human AQP0 at amino acid range 95-144
Immunogen Region	Internal
Specificity	MIP polyclonal antibody (Lens Fiber Major Intrinsic Protein) binds to endogenous Lens Fiber Major Intrinsic Protein at the amino acid region Internal.
Immunogen Sequence	



Immunohistochemistry analysis of AQP0 antibody in paraffin-embedded human brain tissue.



Western blot analysis of lysate from HT-29 cells, using AQP0 antibody.



Western blot analysis of various cells using AQP0 Polyclonal Antibody

This product is suitable for in-vitro studies under the RESEARCH USE ONLY [RUO] licence. This product must not be used as for diagnostic or other medical purposes.
St John's Laboratory Ltd, Knowledge Dock Business Centre, University Way, London, E16 2RD | Tel: 0208 223 3081