

Anti-TNFSF13 antibody (120-200 Internal) (STJ91649)

STJ91649

GENERAL INFORMATION

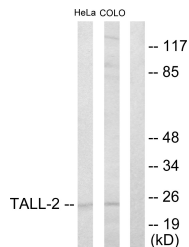
Product Type	Primary antibodies
Short Description	Rabbit polyclonal antibody anti-Tumor Necrosis Factor Ligand Superfamily Member 13 (120-200 Internal) is suitable for use in Western Blot, Immunohistochemistry, Immunofluorescence, Immunocytochemistry and ELISA research applications.
Applications	WB, IHC-P, IF, ICC, ELISA
Host/Source	Rabbit
Reactivity	Human, Mouse, Rat

PRODUCT PROPERTIES

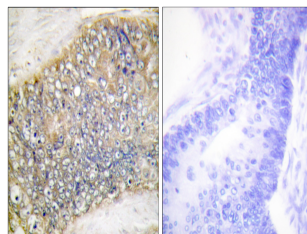
Clonality	Polyclonal
Clone ID	
Concentration	1 mg/mL
Conjugation	Unconjugated
Purification	The antibody was affinity-purified from rabbit anti-serum by affinity-chromatography.
Dilution Range	WB 1:500-1:2000 IHC 1:100-1:300 IF 1:200-1:1000 ELISA 1:10000
Formulation	PBS, 50% Glycerol, 0.5% BSA and 0.02% Sodium Azide.
Isotype	IgG
Storage Instruction	Store at -20°C for up to 1 year from the date of receipt, and avoid repeat freeze-thaw cycles.

TARGET INFORMATION

Gene ID	8741
Gene Symbol	TNFSF13
Uniprot ID	TNF13_HUMAN
Immunogen	The antiserum was produced against synthesized peptide derived from human TALL-2 at amino acid range 151-200
Immunogen Region	120-200 Internal
Specificity	TNFSF13 polyclonal antibody (Tumor Necrosis Factor Ligand Superfamily Member 13) binds to endogenous Tumor Necrosis Factor Ligand Superfamily Member 13 at the amino acid region 120-200 Internal.
Immunogen Sequence	



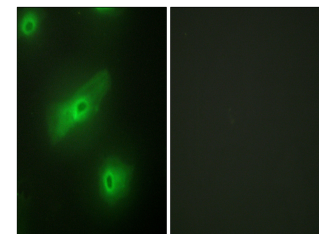
Western blot analysis of lysates from HeLa and COLO205 cells, using TALL-2 Antibody. The lane on the right is blocked with the synthesized peptide.



Immunohistochemistry analysis of paraffin-embedded human colon carcinoma tissue, using TALL-2 Antibody. The picture on the right is blocked with the synthesized peptide.



Western blot analysis of COLO205 cells using APRIL Polyclonal Antibody diluted at 1: 2000



Immunofluorescence analysis of HeLa cells, using TALL-2 Antibody. The picture on the right is blocked with the synthesized peptide.

This product is suitable for in-vitro studies under the RESEARCH USE ONLY [RUO] licence. This product must not be used as for diagnostic or other medical purposes.
St John's Laboratory Ltd, Knowledge Dock Business Centre, University Way, London, E16 2RD | Tel: 0208 223 3081