

Anti-APPL1 antibody (90-170 Internal) (STJ91648)

STJ91648

GENERAL INFORMATION

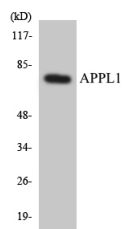
Product Type	Primary antibodies
Short Description	Rabbit polyclonal antibody anti-Dcc-Interacting Protein 13-Alpha (90-170 Internal) is suitable for use in Western Blot and ELISA research applications.
Applications	WB, ELISA
Host/Source	Rabbit
Reactivity	Human, Mouse

PRODUCT PROPERTIES

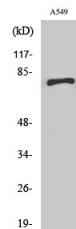
Clonality	Polyclonal
Clone ID	
Concentration	1 mg/mL
Conjugation	Unconjugated
Purification	The antibody was affinity-purified from rabbit anti-serum by affinity-chromatography.
Dilution Range	WB 1:500-1:2000 ELISA 1:40000
Formulation	PBS, 50% Glycerol, 0.5% BSA and 0.02% Sodium Azide.
Isotype	IgG
Storage	Store at -20°C for up to 1 year from the date of receipt, and avoid repeat freeze-thaw cycles.
Instruction	

TARGET INFORMATION

Gene ID	26060
Gene Symbol	APPL1
Uniprot ID	DP13A_HUMAN
Immunogen	The antiserum was produced against synthesized peptide derived from human APPL1 at amino acid range 121-170
Immunogen Region	90-170 Internal
Specificity	APPL1 polyclonal antibody (Dcc-Interacting Protein 13-Alpha) binds to endogenous Dcc-Interacting Protein 13-Alpha at the amino acid region 90-170 Internal.
Immunogen Sequence	



Western blot analysis of the lysates from K562 cells using APPL1 antibody.



Western blot analysis of various cells using APPL1 Polyclonal Antibody.

This product is suitable for in-vitro studies under the RESEARCH USE ONLY [RUO] licence. This product must not be used as for diagnostic or other medical purposes.
 St John's Laboratory Ltd, Knowledge Dock Business Centre, University Way, London, E16 2RD | Tel: 0208 223 3081