

Anti-APOF antibody (190-270 C-Term) (STJ91641)

STJ91641

GENERAL INFORMATION

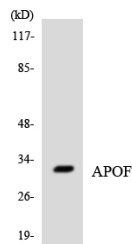
Product Type	Primary antibodies
Short Description	Rabbit polyclonal antibody anti-Apolipoprotein F (190-270 C-Term) is suitable for use in Western Blot and ELISA research applications.
Applications	WB, ELISA
Host/Source	Rabbit
Reactivity	Human, Rat, Mouse

PRODUCT PROPERTIES

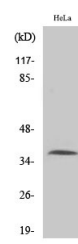
Clonality	Polyclonal
Clone ID	
Concentration	1 mg/mL
Conjugation	Unconjugated
Purification	The antibody was affinity-purified from rabbit anti-serum by affinity-chromatography.
Dilution Range	WB 1:500-1:2000 ELISA 1:40000
Formulation	PBS, 50% Glycerol, 0.5% BSA and 0.02% Sodium Azide.
Isotype	IgG
Storage Instruction	Store at -20°C for up to 1 year from the date of receipt, and avoid repeat freeze-thaw cycles.

TARGET INFORMATION

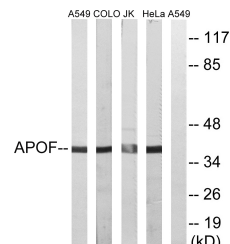
Gene ID	319
Gene Symbol	APOF
Uniprot ID	APOF_HUMAN
Immunogen	The antiserum was produced against synthesized peptide derived from human APOF at amino acid range 221-270
Immunogen Region	190-270 C-Term
Specificity	APOF polyclonal antibody (Apolipoprotein F) binds to endogenous Apolipoprotein F at the amino acid region 190-270 C-Term.
Immunogen Sequence	



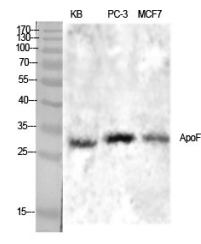
Western blot analysis of the lysates from COLO205 cells using APOF antibody.



Western blot analysis of A549 cells using ApoF Polyclonal Antibody diluted at 1: 1000



Western blot analysis of lysates from HeLa, Jurkat, COLO, and A549 cells, using APOF Antibody. The lane on the right is blocked with the synthesized peptide.



Western blot analysis of various cells using ApoF Polyclonal Antibody diluted at 1: 1000

This product is suitable for in-vitro studies under the RESEARCH USE ONLY [RUO] licence. This product must not be used as for diagnostic or other medical purposes.
St John's Laboratory Ltd, Knowledge Dock Business Centre, University Way, London, E16 2RD | Tel: 0208 223 3081