

## Anti-APOBEC3A antibody (40-120 Internal) (STJ91635)

STJ91635

### GENERAL INFORMATION

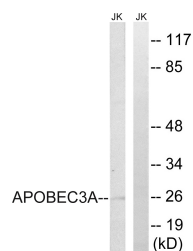
<b>Product Type</b>	Primary antibodies
<b>Short Description</b>	Rabbit polyclonal antibody anti-Dna Dc->Du-Editing Enzyme Apobec-3a (40-120 Internal) is suitable for use in Western Blot and ELISA research applications.
<b>Applications</b>	WB, ELISA
<b>Host/Source</b>	Rabbit
<b>Reactivity</b>	Human, Rat, Mouse

### PRODUCT PROPERTIES

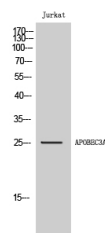
<b>Clonality</b>	Polyclonal
<b>Clone ID</b>	
<b>Concentration</b>	1 mg/mL
<b>Conjugation</b>	Unconjugated
<b>Purification</b>	The antibody was affinity-purified from rabbit anti-serum by affinity-chromatography.
<b>Dilution Range</b>	WB 1:500-1:2000 ELISA 1:10000
<b>Formulation</b>	PBS, 50% Glycerol, 0.5% BSA and 0.02% Sodium Azide.
<b>Isotype</b>	IgG
<b>Storage</b>	Store at -20°C for up to 1 year from the date of receipt, and avoid repeat freeze-thaw cycles.
<b>Instruction</b>	

### TARGET INFORMATION

<b>Gene ID</b>	100913187/200315
<b>Gene Symbol</b>	APOBEC3A
<b>Uniprot ID</b>	ABC3A_HUMAN
<b>Immunogen</b>	The antiserum was produced against synthesized peptide derived from human APOBEC3A at amino acid range 27-76
<b>Immunogen Region</b>	40-120 Internal
<b>Specificity</b>	APOBEC3A polyclonal antibody (Dna Dc->Du-Editing Enzyme Apobec-3a) binds to endogenous Dna Dc->Du-Editing Enzyme Apobec-3a at the amino acid region 40-120 Internal.
<b>Immunogen Sequence</b>	



Western blot analysis of lysates from Jurkat cells, using APOBEC3A Antibody. The lane on the right is blocked with the synthesized peptide.



Western blot analysis of Jurkat cells using APOBEC3A Polyclonal Antibody

This product is suitable for in-vitro studies under the RESEARCH USE ONLY [RUO] licence. This product must not be used as for diagnostic or other medical purposes.  
St John's Laboratory Ltd, Knowledge Dock Business Centre, University Way, London, E16 2RD | Tel: 0208 223 3081