

Anti-ANAPC5 antibody (120-200 Internal) (STJ91627)

STJ91627

GENERAL INFORMATION

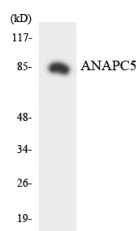
Product Type	Primary antibodies
Short Description	Rabbit polyclonal antibody anti-Anaphase-Promoting Complex Subunit 5 (120-200 Internal) is suitable for use in Western Blot and ELISA research applications.
Applications	WB, ELISA
Host/Source	Rabbit
Reactivity	Human, Rat, Mouse

PRODUCT PROPERTIES

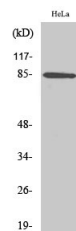
Clonality	Polyclonal
Clone ID	
Concentration	1 mg/mL
Conjugation	Unconjugated
Purification	The antibody was affinity-purified from rabbit anti-serum by affinity-chromatography.
Dilution Range	WB 1:500-1:2000 ELISA 1:5000
Formulation	PBS, 50% Glycerol, 0.5% BSA and 0.02% Sodium Azide.
Isotype	IgG
Storage	Store at -20°C for up to 1 year from the date of receipt, and avoid repeat freeze-thaw cycles.
Instruction	

TARGET INFORMATION

Gene ID	51433
Gene Symbol	ANAPC5
Uniprot ID	APC5_HUMAN
Immunogen	The antiserum was produced against synthesized peptide derived from human ANAPC5 at amino acid range 151-200
Immunogen Region	120-200 Internal
Specificity	ANAPC5 polyclonal antibody (Anaphase-Promoting Complex Subunit 5) binds to endogenous Anaphase-Promoting Complex Subunit 5 at the amino acid region 120-200 Internal.
Immunogen Sequence	



Western blot analysis of the lysates from HeLa cells using ANAPC5 antibody.



Western blot analysis of various cells using APC5 Polyclonal Antibody

This product is suitable for in-vitro studies under the RESEARCH USE ONLY [RUO] licence. This product must not be used as for diagnostic or other medical purposes.
 St John's Laboratory Ltd, Knowledge Dock Business Centre, University Way, London, E16 2RD | Tel: 0208 223 3081