

Anti-AP-2 Alpha/Beta antibody (360-440 C-Term) (STJ91618)

STJ91618

GENERAL INFORMATION

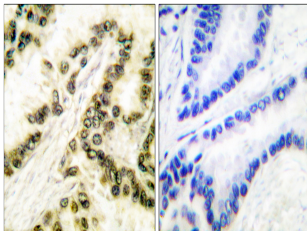
Product Type	Primary antibodies
Short Description	Rabbit polyclonal antibody anti-Transcription factor AP-2-alpha and Transcription factor AP-2-beta (360-440 C-Term) is suitable for use in Western Blot, Immunohistochemistry, Immunofluorescence and ELISA research applications.
Applications	WB, IHC-P, IF-P, ELISA
Host/Source	Rabbit
Reactivity	Human, Mouse, Rat

PRODUCT PROPERTIES

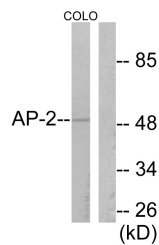
Clonality	Polyclonal
Clone ID	
Concentration	1 mg/mL
Conjugation	Unconjugated
Purification	The antibody was affinity-purified from rabbit anti-serum by affinity-chromatography.
Dilution	WB 1:500-1:2000
Range	IHC 1:100-1:300 ELISA 1:10000
Formulation	PBS, 50% Glycerol, 0.5% BSA and 0.02% Sodium Azide.
Isotype	IgG
Storage Instruction	Store at -20°C for up to 1 year from the date of receipt, and avoid repeat freeze-thaw cycles.

TARGET INFORMATION

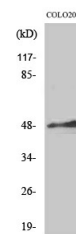
Gene ID	7020 7021
Gene Symbol	TFAP2A TFAP2B
Uniprot ID	AP2A_HUMAN AP2B_HUMAN
Immunogen	The antiserum was produced against synthesized peptide derived from human AP-2 at amino acid range 388-437
Immunogen Region	360-440 C-Term
Specificity	AP-2 Alpha/Beta polyclonal antibody (Transcription factor AP-2-alpha and Transcription factor AP-2-beta) binds to endogenous Transcription factor AP-2-alpha and Transcription factor AP-2-beta at the amino acid region 360-440 C-Term.
Immunogen Sequence	



Immunohistochemistry analysis of paraffin-embedded human lung carcinoma tissue, using AP-2 Antibody. The picture on the right is blocked with the synthesized peptide.



Western blot analysis of lysates from COLO205 cells, using AP-2 Antibody. The lane on the right is blocked with the synthesized peptide.



Western blot analysis of various cells using AP-2 Alpha/Beta Polyclonal Antibody cells nucleus extracted by Minute TM Cytoplasmic and Nuclear Fractionation kit (SC-003, Inventibiotec, MN, USA).

This product is suitable for in-vitro studies under the RESEARCH USE ONLY [RUO] licence. This product must not be used as for diagnostic or other medical purposes.
St John's Laboratory Ltd, Knowledge Dock Business Centre, University Way, London, E16 2RD | Tel: 0208 223 3081