

Anti-JUN antibody (30-110) (STJ91616)

STJ91616

GENERAL INFORMATION

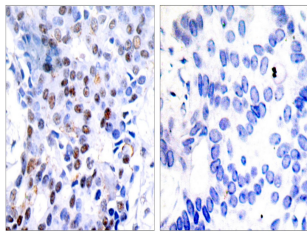
Product Type	Primary antibodies
Short Description	Rabbit polyclonal antibody anti-Transcription Factor Ap-1 (30-110) is suitable for use in Immunofluorescence, Immunocytochemistry, Western Blot, Immunohistochemistry, Immunoprecipitation and ELISA research applications.
Applications	IF, ICC, WB, IHC-P, IP, ELISA
Host/Source	Rabbit
Reactivity	Human, Mouse, Rat

PRODUCT PROPERTIES

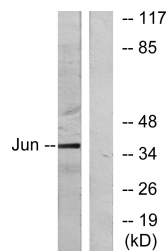
Clonality	Polyclonal
Clone ID	
Concentration	1 mg/mL
Conjugation	Unconjugated
Purification	The antibody was affinity-purified from rabbit anti-serum by affinity-chromatography.
Dilution Range	IF 1:50-200 WB 1:500-1:2000 IHC 1:100-1:300 IP 2-5 ug/mg ELISA 1:20000
Formulation	PBS, 50% Glycerol, 0.5% BSA and 0.02% Sodium Azide.
Isotype	IgG
Storage Instruction	Store at -20°C for up to 1 year from the date of receipt, and avoid repeat freeze-thaw cycles.

TARGET INFORMATION

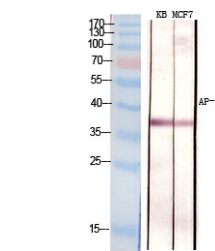
Gene ID	3725
Gene Symbol	JUN
Uniprot ID	JUN_HUMAN
Immunogen	The antiserum was produced against synthesized peptide derived from human c-Jun at amino acid range 58-107
Immunogen Region	30-110
Specificity	JUN polyclonal antibody (Transcription Factor Ap-1) binds to endogenous Transcription Factor Ap-1 at the amino acid region 30-110.
Immunogen Sequence	



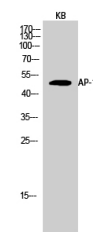
Immunohistochemistry analysis of paraffin-embedded human breast carcinoma tissue, using c-Jun Antibody. The picture on the right is blocked with the synthesized peptide.



Western blot analysis of lysates from HeLa cells, using c-Jun Antibody. The lane on the right is blocked with the synthesized peptide.



Western blot analysis of various cells using AP-1 Polyclonal Antibody diluted at 1: 2000



Western blot analysis of KB cells using AP-1 Polyclonal Antibody diluted at 1: 2000