

Anti-SLC25A6 antibody (90-170 Internal) (STJ91606)

STJ91606

GENERAL INFORMATION

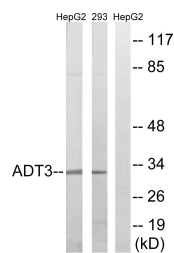
Product Type	Primary antibodies
Short Description	Rabbit polyclonal antibody anti-Adp/Atp Translocase 3 (90-170 Internal) is suitable for use in Western Blot, Immunohistochemistry, Immunofluorescence and ELISA research applications.
Applications	WB, IHC-P, IF-P, ELISA
Host/Source	Rabbit
Reactivity	Human, Rat, Mouse

PRODUCT PROPERTIES

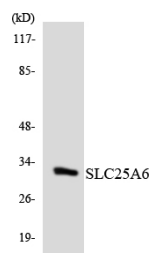
Clonality	Polyclonal
Clone ID	
Concentration	1 mg/mL
Conjugation	Unconjugated
Purification	The antibody was affinity-purified from rabbit anti-serum by affinity-chromatography.
Dilution Range	WB 1:500-1:2000 IHC 1:100-1:300 ELISA 1:40000
Formulation	PBS, 50% Glycerol, 0.5% BSA and 0.02% Sodium Azide.
Isotype	IgG
Storage Instruction	Store at -20°C for up to 1 year from the date of receipt, and avoid repeat freeze-thaw cycles.

TARGET INFORMATION

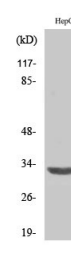
Gene ID	293
Gene Symbol	SLC25A6
Uniprot ID	ADT3_HUMAN
Immunogen	The antiserum was produced against synthesized peptide derived from human SLC25A6 at amino acid range 121-170
Region	90-170 Internal
Specificity	SLC25A6 polyclonal antibody (Adp/Atp Translocase 3) binds to endogenous Adp/Atp Translocase 3 at the amino acid region 90-170 Internal.
Immunogen Sequence	



Western blot analysis of lysates from HepG2 and 293 cells, using SLC25A6 Antibody. The lane on the right is blocked with the synthesized peptide.



Western blot analysis of the lysates from K562 cells using SLC25A6 antibody.



Western blot analysis of various cells using ANT3 Polyclonal Antibody diluted at 1: 2000

This product is suitable for in-vitro studies under the RESEARCH USE ONLY [RUO] licence. This product must not be used as for diagnostic or other medical purposes.
St John's Laboratory Ltd, Knowledge Dock Business Centre, University Way, London, E16 2RD | Tel: 0208 223 3081