

Anti-ANXA3 antibody (Internal) (STJ91602)

STJ91602

GENERAL INFORMATION

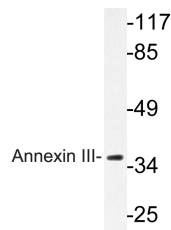
Product Type	Primary antibodies
Short Description	Rabbit polyclonal antibody anti-Annexin A3 (Internal) is suitable for use in Western Blot, Immunohistochemistry, Immunofluorescence and ELISA research applications.
Applications	WB, IHC-P, IF-P, ELISA
Host/Source	Rabbit
Reactivity	Human, Mouse

PRODUCT PROPERTIES

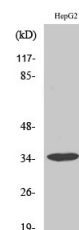
Clonality	Polyclonal
Clone ID	
Concentration	1 mg/mL
Conjugation	Unconjugated
Purification	The antibody was affinity-purified from rabbit anti-serum by affinity-chromatography.
Dilution Range	WB 1:500-1:2000 IHC 1:100-1:300 ELISA 1:5000
Formulation	PBS, 50% Glycerol, 0.5% BSA and 0.02% Sodium Azide.
Isotype	IgG
Storage Instruction	Store at -20°C for up to 1 year from the date of receipt, and avoid repeat freeze-thaw cycles.

TARGET INFORMATION

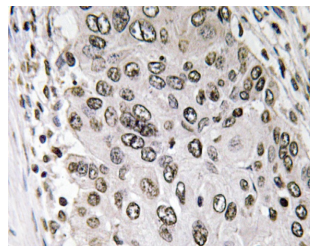
Gene ID	306
Gene Symbol	ANXA3
Uniprot ID	ANXA3_HUMAN
Immunogen	The antiserum was produced against synthesized peptide derived from human Annexin III at amino acid range 15-64
Immunogen Region	Internal
Specificity	ANXA3 polyclonal antibody (Annexin A3) binds to endogenous Annexin A3 at the amino acid region Internal.
Immunogen Sequence	



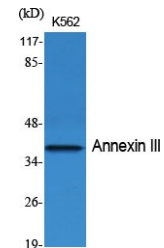
Western blot analysis of lysate from HepG2 cells, using Annexin III antibody.



Western blot analysis of HepG2 cells using Annexin III Polyclonal Antibody diluted at 1: 2000



Immunohistochemistry analysis of Annexin III antibody in paraffin-embedded human lung carcinoma tissue.



Western blot analysis of various cells using Annexin III Polyclonal Antibody diluted at 1: 2000

This product is suitable for in-vitro studies under the RESEARCH USE ONLY [RUO] licence. This product must not be used as for diagnostic or other medical purposes.
St John's Laboratory Ltd, Knowledge Dock Business Centre, University Way, London, E16 2RD | Tel: 0208 223 3081